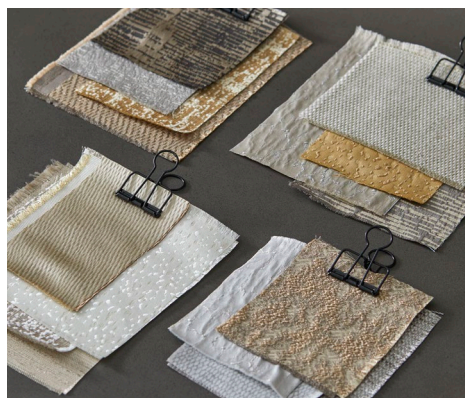


WARWICK



URBAN

ACROPOLIS. BILBAO. CHRYSLER. DANCING. EIFFEL. FLATIRON. GHERKIN
GUGGENHEIM. HAGIA. HANCOCK. LOUVRE. NATIONAL. POTALA. SAVOYE. TAIPEI



A COLLECTION OF URBAN STYLE DRAPERY - URBAN by Warwick

Taking inspiration from urban surroundings, URBAN is a comprehensive collection of different textured drapery that will create an array of original interiors and moods. From sophisticated warm and cool toned neutrals, to more traditional hues of gold and silver which enhance the metallic finish in some designs, this book is a go-to guide to creating a unique urban interior.

- **DESIGN:** With 15 designs and textures, every range featured in URBAN varies — from subtle, to more distinct; directional, to all over; and more organic, to structured. All fabrics in this collection have a slight sheen to them in varying degrees, with exceptions National and Hancock, which are dry, raw and offer organic solutions. Dancing, Taipei, Eiffel, Chrysler, Guggenheim, Potala, and Acropolis are all high shine, lustrous and metallic look fabrics; while Flatiron and Hagia are subtle in sheen and have more of a matte, peppered texture.
- **RATING:** With Oeko-Tex certification, URBAN offers a generous total of 70 options for individual and diverse schemes. This collection book is a go-to for decorative, residential drapery.

| DESIGN | USAGE | COMPOSITION | COL CODE AUS/NZ |
|------------|--------------------------|---------------------------------------|--------------------|
| ACROPOLIS | Drapery | 100% Polyester | G/BL |
| BILBAO | Drapery/General Domestic | 85% Polyester, 10% Viscose, 5% Cotton | G/BB |
| CHRYSLER | Drapery/General Domestic | 100% Polyester | G/BL |
| DANCING | Drapery | 100% Polyester | G/BL |
| EIFFEL | Drapery | 100% Polyester | G/BL |
| FLATIRON | Drapery | 91% Polyester, 9% Viscose | G/BB |
| GHERKIN | Drapery | 100% Polyester | G/BB |
| GUGGENHEIM | Drapery | 100% Polyester | G/BL |
| HAGIA | Drapery/General Domestic | 100% Polyester | G/BL |
| HANCOCK | Drapery | 63% Polyester, 37% Cotton | G/BB |
| LOUVRE | Drapery | 100% Polyester | G/BL |
| NATIONAL | Drapery | 100% Polyester | G/BB |
| POTALA | Drapery | 100% Polyester | G/BB |
| SAVOYE | Drapery | 100% Polyester | G/BB |
| TAIPEI | Drapery | 100% Polyester | G/BB |

For full test details please contact your Warwick Sales Consultant



For more information about
Warwick Fabrics call

Australia
Toll free 1300 787 888
www.warwick.com.au

New Zealand
+64 (0) 9 477 3080
www.warwick.co.nz

United Kingdom
+44 (0) 1451 822 383
www.warwick.co.uk

