



WARWICK

SUNDEC®

Outdoor fabric
for outdoor comfort

SUNDEC®

SUNDEC, the perfect fabric for all outdoor applications

Whether by the pool, on a boat, entertaining friends alfresco style or catching up in an outdoor cafe, SUNDEC is designed to create a beautifully coordinating environment that is easy to maintain and enjoy.

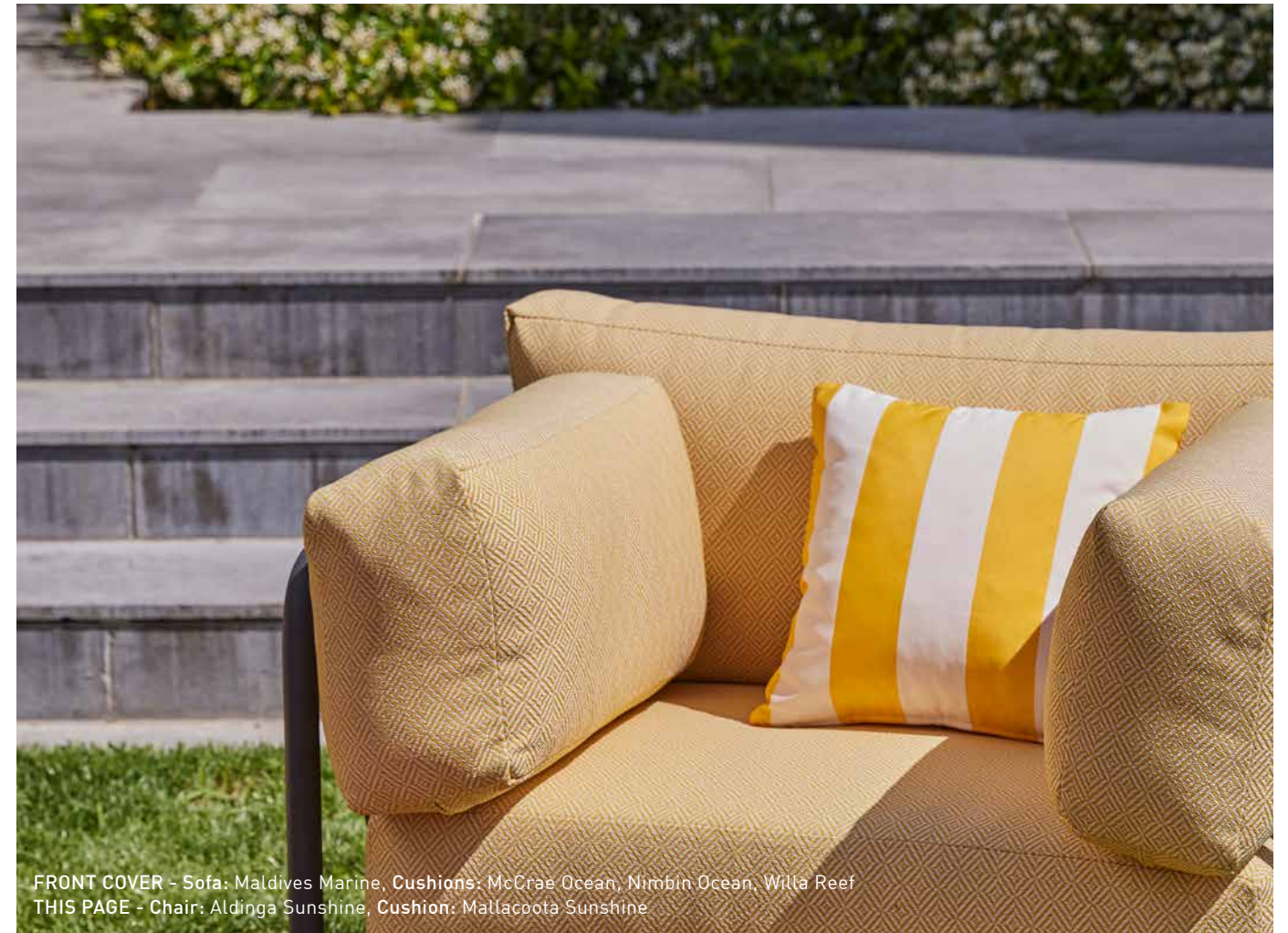
Developed to withstand;

- Commercial sunlight exposure requirements
- Mould and mildew growth
- Chlorine damage
- General wear and tear

SUNDEC is also water repellent, has microbial hygiene protection, is lightfast, durable and easy to clean all year round making stylish outdoor living comfier and easier.

Samples

It is always recommended that a free cutting be ordered to see the colour and scale prior to any placement of orders. This can be done via our website www.warwick.com.au





Cushions: (left to right) Lomani Pumice with Lomani Cloud piping, Lomani Cloud with Lomani Ash piping, Lomani Lime with Lomani Cloud piping, Kona Pebble with Lomani Cloud piping.

What is SUNDEC®

Ultra violet resistant

SUNDEC fabrics have excellent ultraviolet blocking agents which protect the backbone of the fabric from the effects of UV radiation. SUNDEC fabrics have been tested for weathering, such as sun, rain and humidity, obtaining exceptional UV standards.

Stain resistance

SUNDEC fabrics have been carefully processed and treated, protecting each fibre to reduce absorption of soil and stains.

Cleanability

Due to the fabrics being treated with stain protection, SUNDEC can be safely and easily cleaned. We recommend the use of reticulated foam, which is a porous low density foam, allowing water and air to flow through easily.

Versatile

SUNDEC fabrics are suitable for both indoor and outdoor use, offered in a variety of designs and colours. Some ranges are reversible allowing for extra creative interpretation.

Water repellent

SUNDEC fibres are protected by an invisible shield protecting the fabric and keeping it dry and clean. It has a natural anti-adherent that repels water.

Halo

Halo, is a Warwick brand which identifies fabrics that have the Halo Easy-Clean properties. SUNDEC is part of the Halo range making it easy to clean, hard wearing and built to last. These fabrics are also resistant to pilling, mould/mildew and impervious to attacks from moths and insects.

Halo fabrics are woven to precise specifications and tested to exacting standards for;

- Colourfastness
- Abrasion
- Safety in fabrics
- Inherent stain resistance

Colour and Scale

Images in this brochure are intended as a visual representation only. Swatches are not 100% to scale.

WarGuard

WarGuard fabrics are pre-treated with a fibre-protective safe solution, that is free from harmful chemicals, which makes fabric inherently stain resistant for everyday wear and effortless cleaning.

Encore

Leading the way to improve environmental and social impact, Encore is the symbol for Warwick's sustainably produced portfolio where each quality is made from at least 50% recycled yarn.



FIRE RATED



STANDARD
100



WARWICK



WarGuard
Stain Treatment



Encore
Recycled



Reversible
Design

Look for our other features on individual qualities.

All SUNDEC fabrics are FR-Rated, Oeko-Tex certified and come with Halo Easy Clean benefits.

*Excludes Lustrell Admiral and Commodore.



Stradbroke Sand

STRADBROKE, ROTTNEST
& MAGNETIC

W

E

A contemporary, surroundings inspired collection using subtle texture, organic aesthetics and landscape evoked colours to create a transitional mix and match compilation.



Stradbroke Ivory



Rottnest Ivory



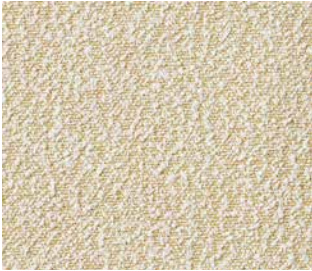
Magnetic Ivory



Rottnest Sand



Magnetic Sand



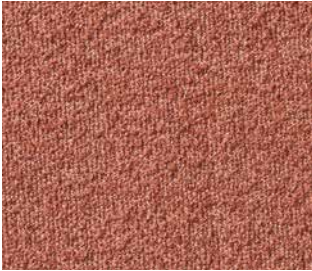
Stradbroke Beach



Rottnest Beach



Magnetic Beach



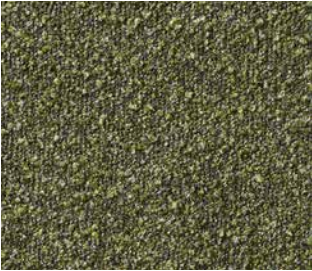
Stradbroke Coral



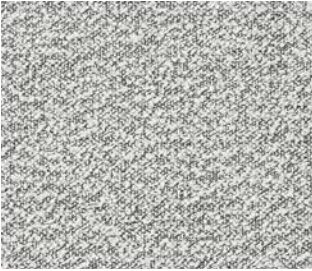
Rottnest Coral



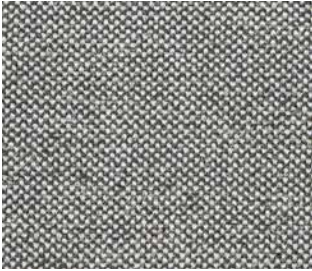
Magnetic Coral



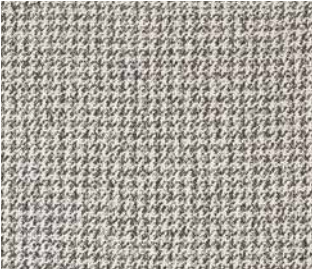
Stradbroke Moss



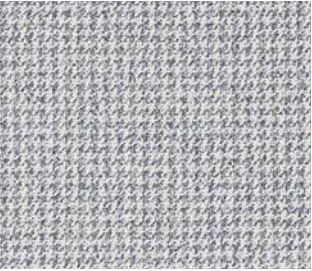
Stradbroke Gull



Rottnest Gull



Magnetic Gull



Magnetic Ocean



Rottnest Moss



Magnetic Moss



Stradbroke Ocean



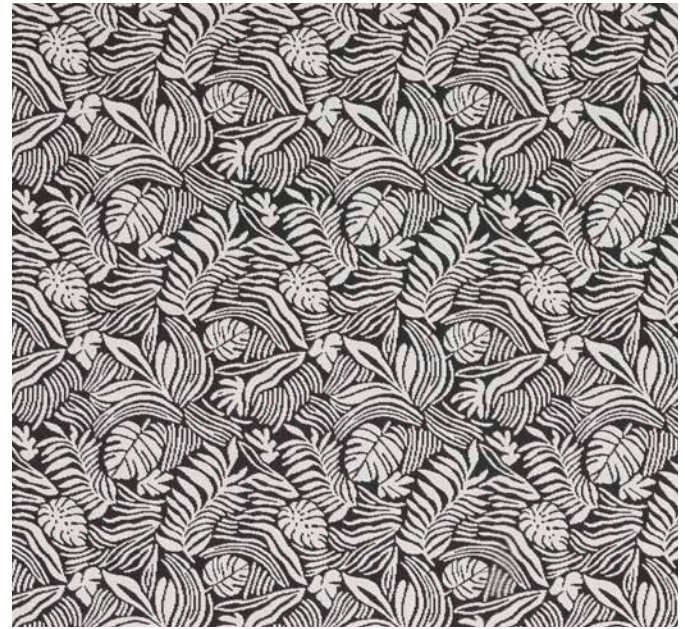
Rottnest Ocean

Chair: McCrae Reef, Cushion: Maldives Reef



MCCRAE

Infuse every outdoor moment with a journey of texture, colour and pattern.



McCrae Orca



McCrae Sunshine



McCrae Orange



McCrae Gull



McCrae Monstera



McCrae Hibiscus



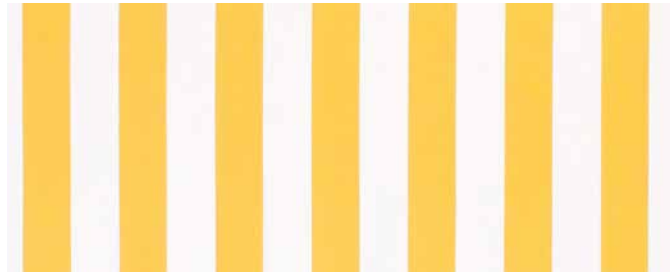
McCrae Sand



McCrae Reef



McCrae Ocean

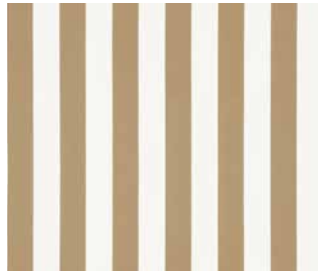


MALLACOOTA

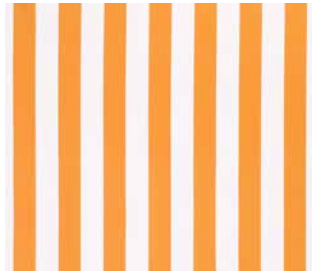


Timeless stripes that are bold and colourful to transform outdoor spaces with a blend of fun and classic sophistication.

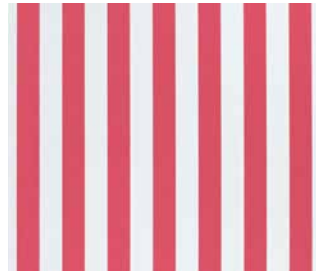
Mallacoota Sunshine



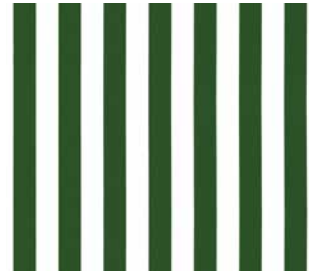
Mallacoota Sand



Mallacoota Melon



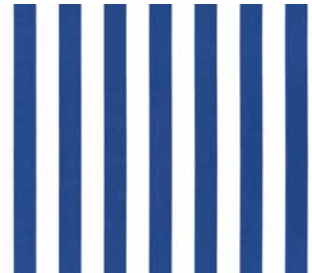
Mallacoota Hibiscus



Mallacoota Monstera



Mallacoota Ocean



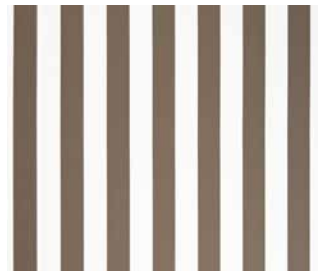
Mallacoota Cobalt



Mallacoota Marine



Mallacoota Turquoise



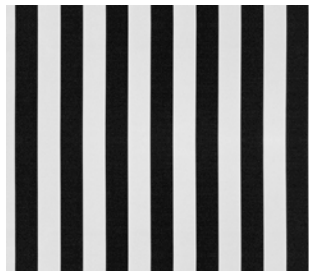
Mallacoota Stone



Mallacoota Pumice



Mallacoota Charcoal



Mallacoota Ash

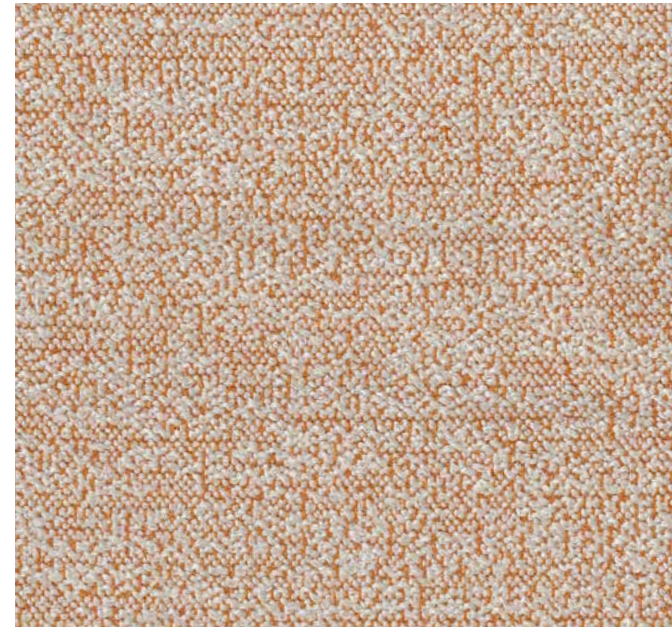


Beanbags: Mallacoota Ash



MALDIVES

Texture and tone perfectly paired with stylish colour combinations that are versatile and complimentary to the art of living outdoors.



Maldives Tangerine



Maldives Sand



Maldives Oyster



Maldives Splice



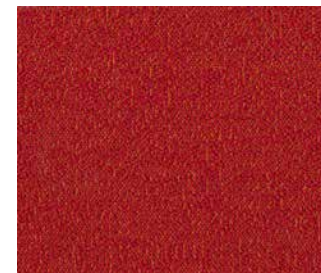
Maldives Monstera



Maldives Sunshine



Maldives Orange



Maldives Hibiscus



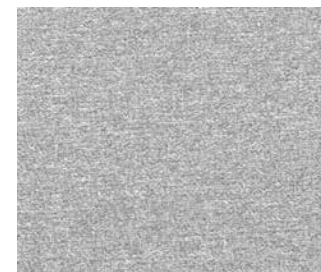
Maldives Reef



Maldives Marine



Maldives Ocean



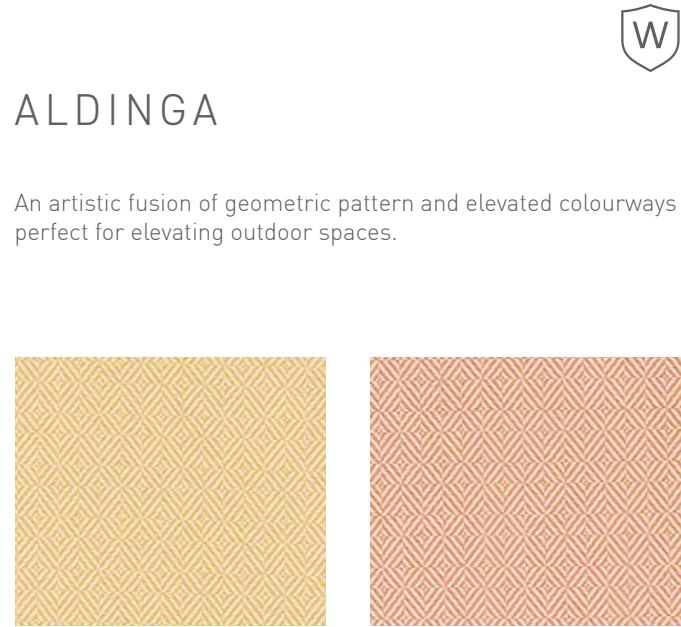
Maldives Gull



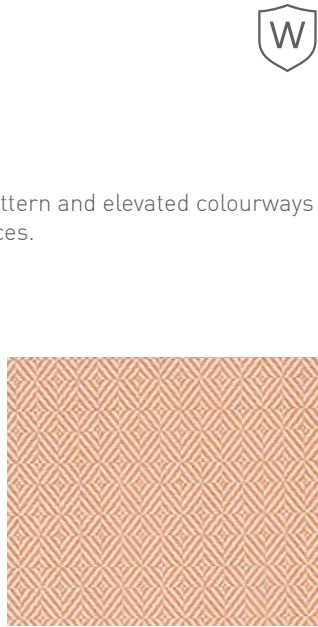
Maldives Orca



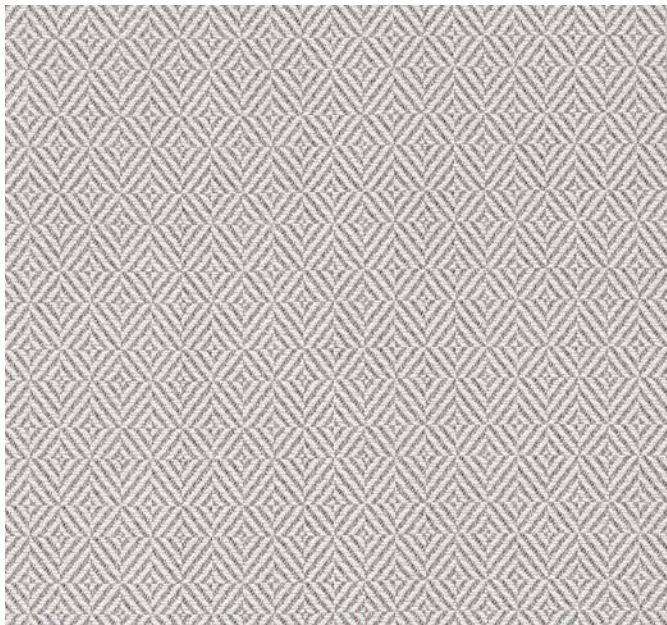
Aldinga Sand



Aldinga Sunshine



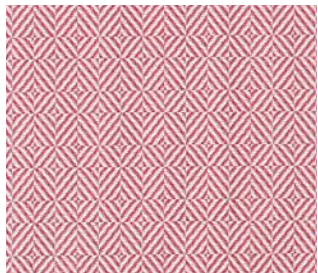
Aldinga Orange



Aldinga Gull



Aldinga Lime



Aldinga Hibiscus



Aldinga Reef



Aldinga Ocean



ALDINGA

An artistic fusion of geometric pattern and elevated colourways perfect for elevating outdoor spaces.



Beanbag: Joss Orange



Joss Sand



Joss Gull



Joss Reef



Joss Ocean



Joss Sunshine



Joss Orange



Joss Monstera



Joss Hibiscus



JOSS



Portsea Monstera

PORTSEA

Classic charm with unparalleled refinement, Portsea is a contrasting stripe that feels familiar, with a design formality that is timeless and uniquely appealing.



Portsea Hibiscus



Portsea Sunshine



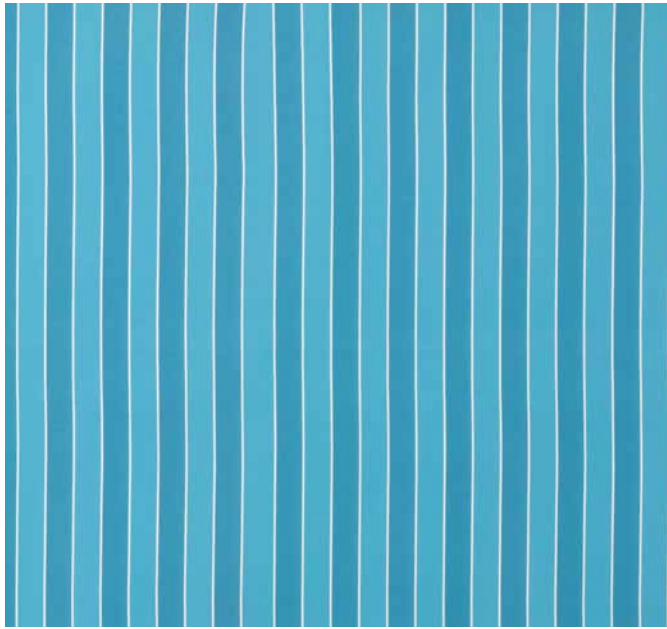
Portsea Reef



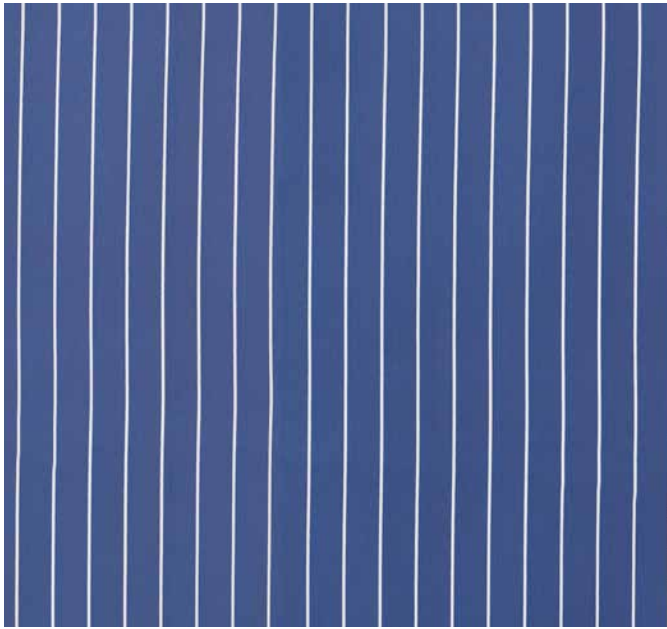
Portsea Oyster



Sunlouge: Portsea Oyster, Cushions: Maldives Orca, McCrae Orca



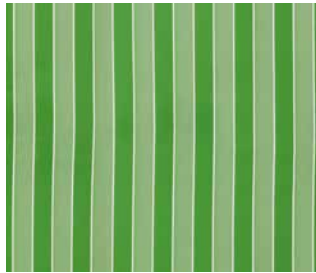
Willa Reef



Willa Ocean



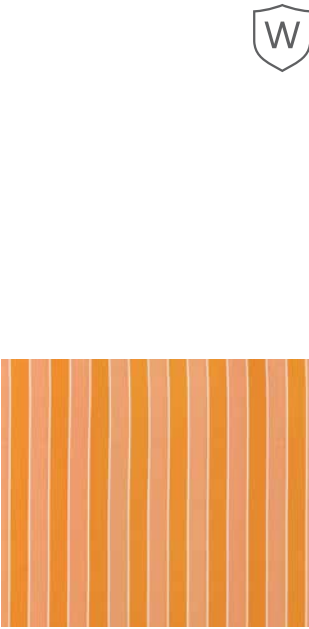
Willa Sunshine



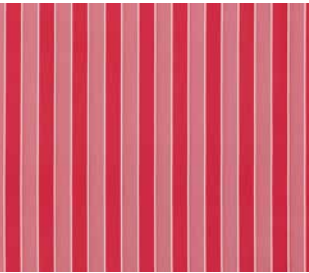
Willa Monstera



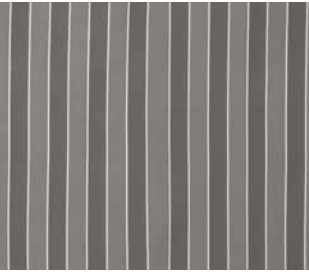
Willa Oyster



Willa Orange



Willa Hibiscus



Willa Gull



Cushions: Hidalgo Sand, Willa Orange, Hidalgo Navy



HIDALGO

The beauty of a classic regency stripe enhanced with stylish colour combinations will create a relaxed and welcoming outdoor atmosphere.



Hidalgo Sand



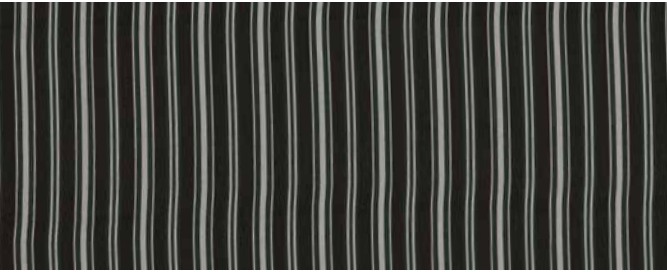
Hidalgo Coral



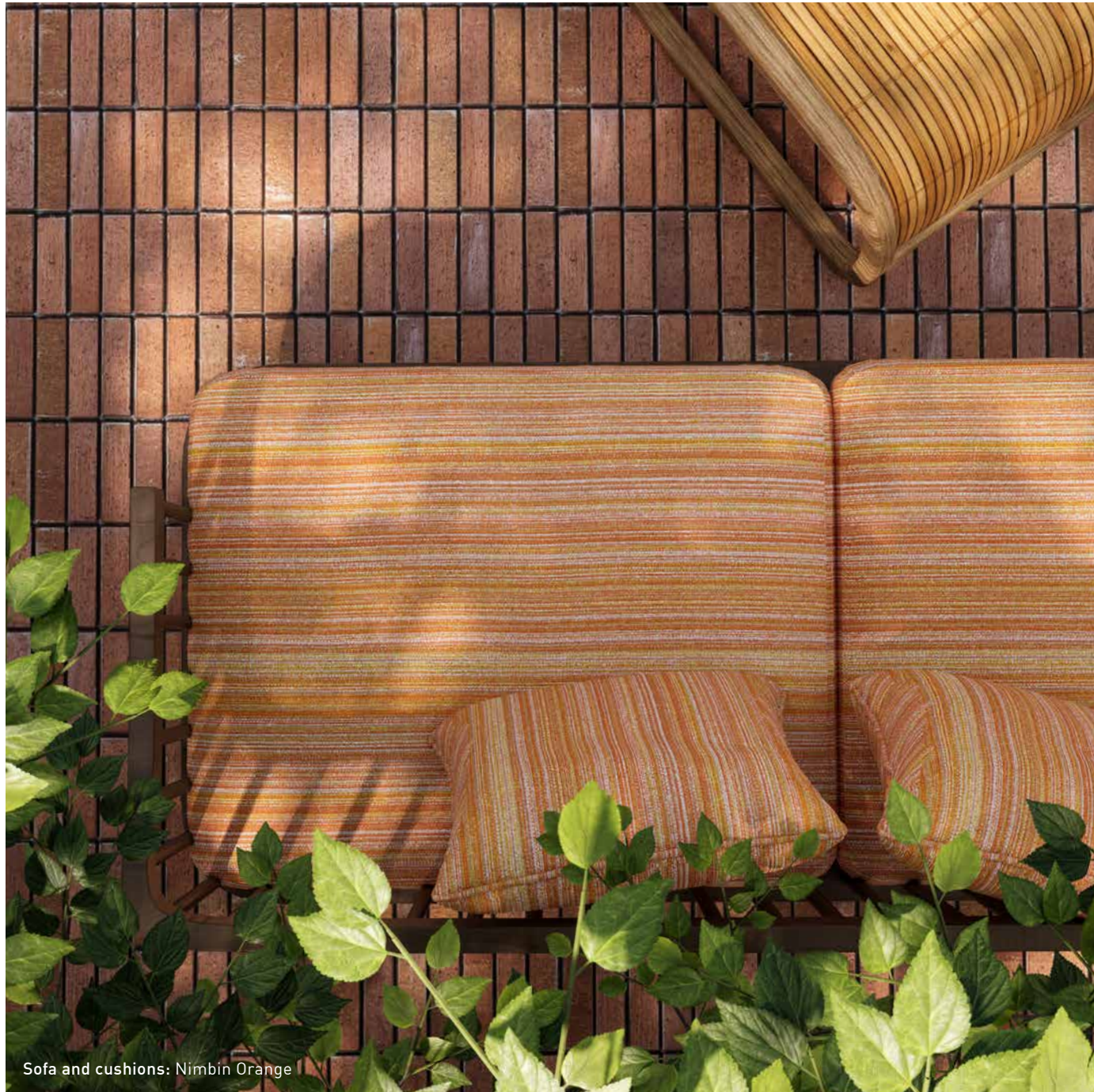
Hidalgo Ocean



Hidalgo Navy



Hidalgo Jet



Sofa and cushions: Nimbin Orange



NIMBIN

Texture and colour are brought to life with Nimbin where retro nostalgia is perfectly interpreted in a modernised design.



Nimbin Sand



Nimbin Sunshine



Nimbin Gull



Nimbin Orange



Nimbin Ocean



Nimbin Hibiscus



Sosa Natural

SOSA



A design solution that is elegant and understated with an expansive opportunity for creative application using the interplay of reversible pattern to mix and match.



Sosa Natural | Reverse



Sosa Forest



Sosa Forest | Reverse



Sosa Sand



Sosa Sand | Reverse



Sosa Coral



Sosa Coral | Reverse



Sosa Silver



Sosa Silver | Reverse



Sosa Ocean



Sosa Ocean | Reverse



Sosa Celadon



Sosa Celadon | Reverse



Sosa Palm



Sosa Palm | Reverse



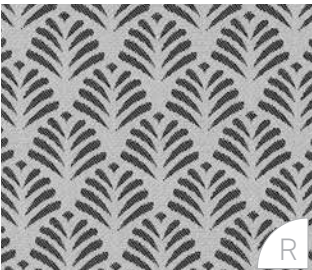
Sosa Navy



Sosa Navy | Reverse



Sosa Jet



Sosa Jet | Reverse



Corozal Natural



Corozal Natural | Reverse

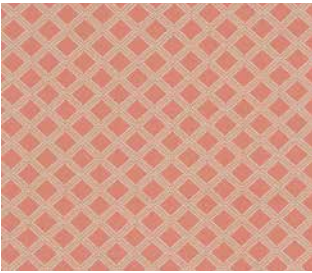
COROZAL



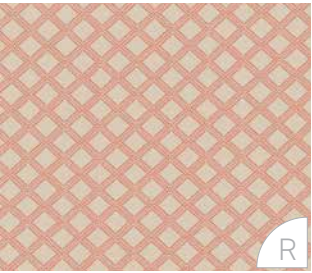
Corozal Sand



Corozal Sand | Reverse



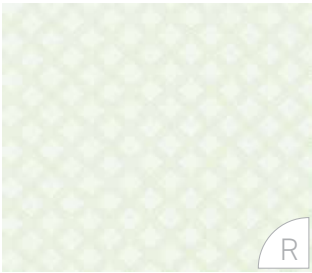
Corozal Coral



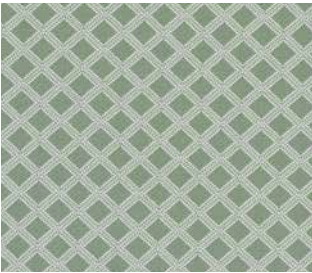
Corozal Coral | Reverse



Corozal Celadon



Corozal Celadon | Reverse



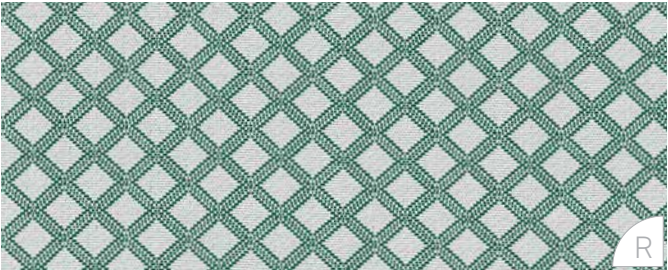
Corozal Palm



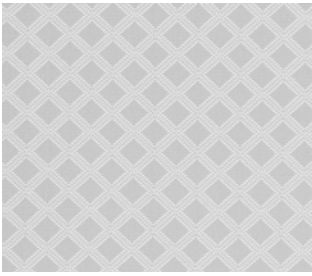
Corozal Palm | Reverse



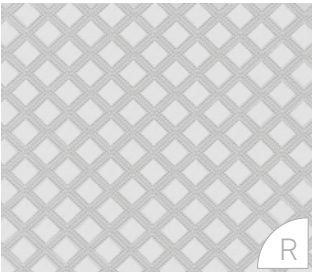
Corozal Forest



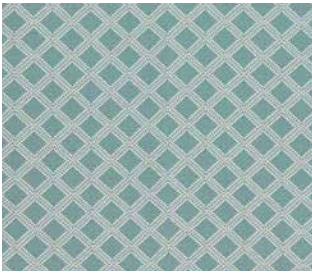
Corozal Forest | Reverse



Corozal Silver



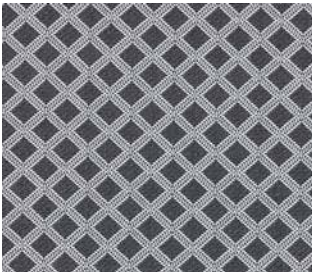
Corozal Silver | Reverse



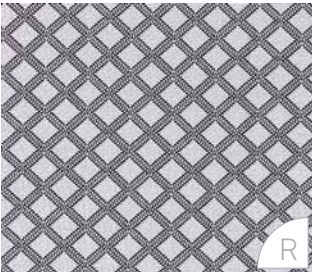
Corozal Ocean



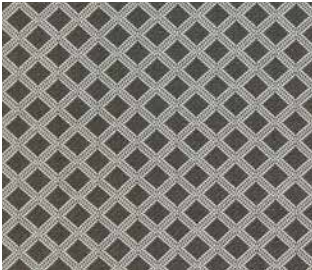
Corozal Ocean | Reverse



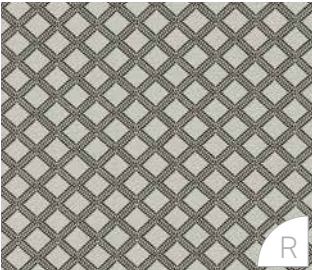
Corozal Navy



Corozal Navy | Reverse



Corozal Jet



Corozal Jet | Reverse



Lounges: Palo Ocean, Corozal Ocean

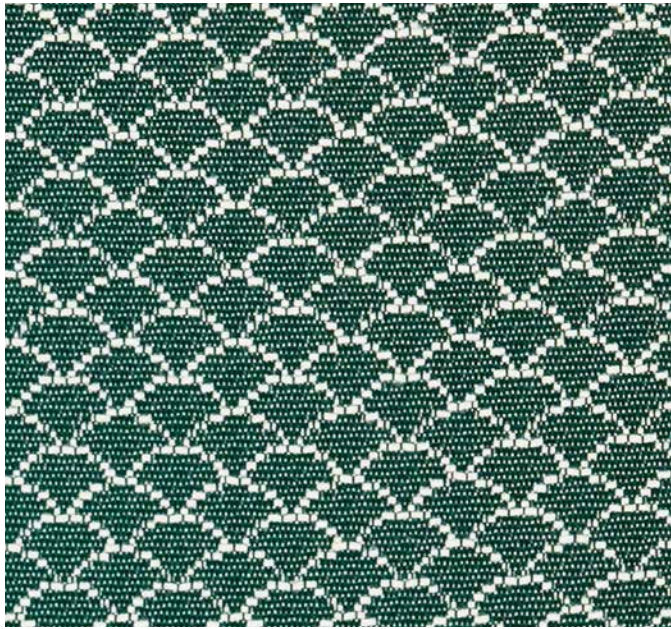


Palo Natural

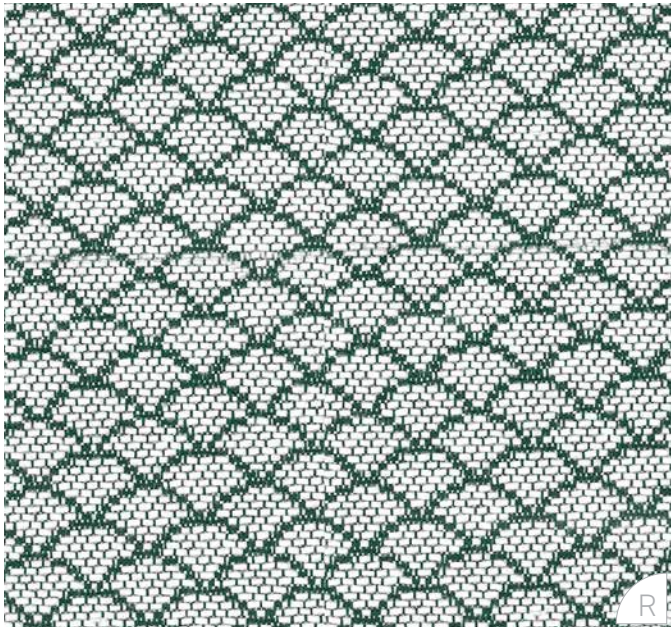
PALO



Palo Natural | Reverse



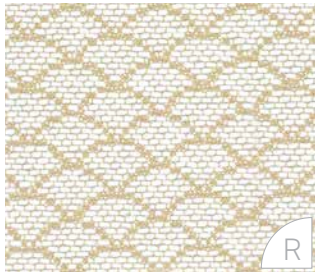
Palo Forest



Palo Forest | Reverse



Palo Sand



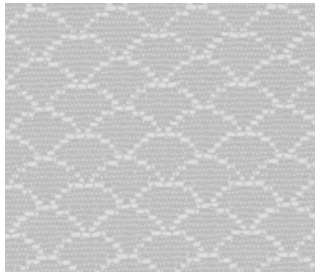
Palo Sand | Reverse



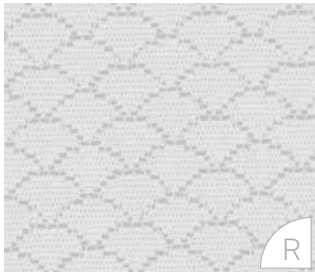
Palo Coral



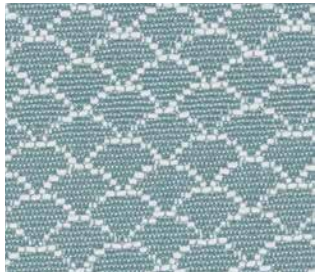
Palo Coral | Reverse



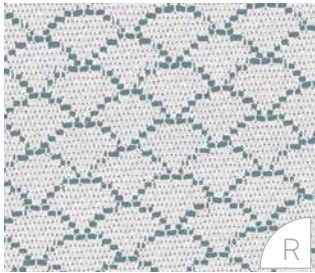
Palo Silver



Palo Silver | Reverse



Palo Ocean



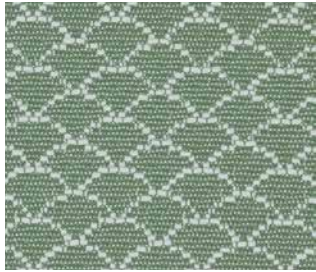
Palo Ocean | Reverse



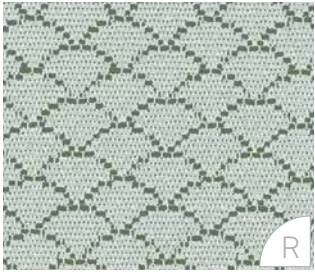
Palo Celadon



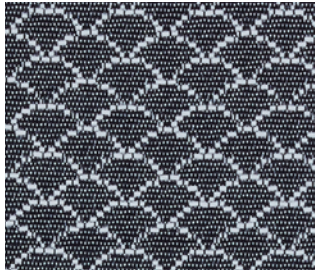
Palo Celadon | Reverse



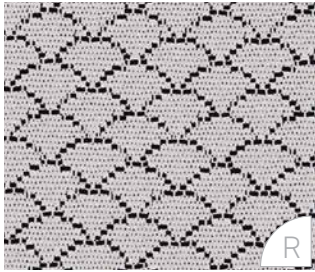
Palo Palm



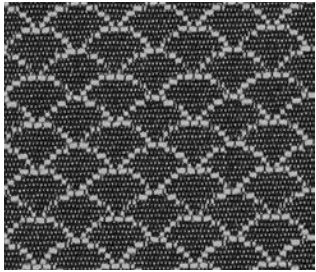
Palo Palm | Reverse



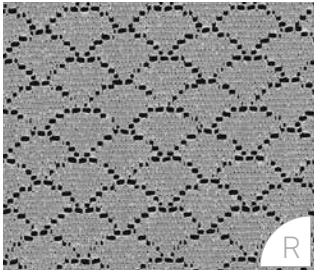
Palo Navy



Palo Navy | Reverse



Palo Jet



Palo Jet | Reverse

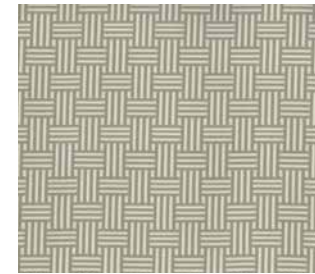
MATACAWA



Dimensional pattern that is tactile and transitional.
Symmetrical in design with stylish detailing and a colour
palette that can be subtly relaxed or vibrant and fun.



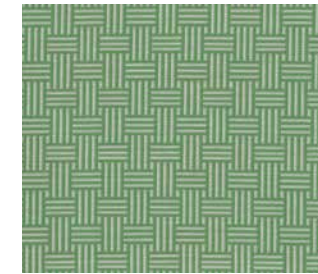
Chair Cushions: Matakawa Sand



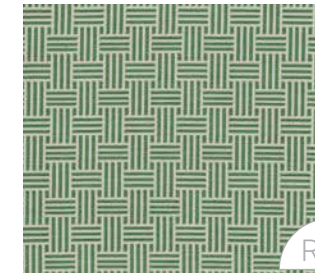
Matakawa Sand



Matakawa Sand | Reverse



Matakawa Palm



Matakawa Palm | Reverse



Matakawa Lobster



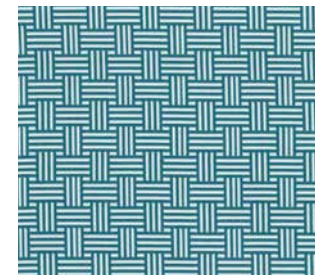
Matakawa Lobster | Reverse



Matakawa Hibiscus



Matakawa Hibiscus | Reverse



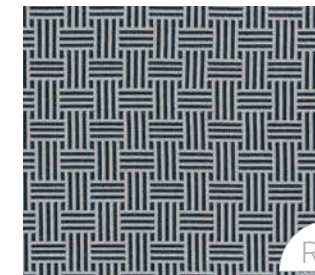
Matakawa Reef



Matakawa Reef | Reverse



Matakawa Marine



Matakawa Marine | Reverse



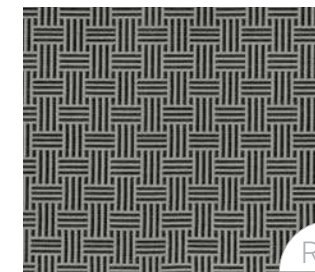
Matakawa Gull



Matakawa Gull | Reverse



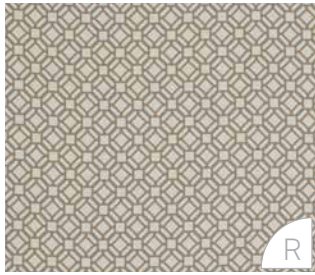
Matakawa Basalt



Matakawa Basalt | Reverse

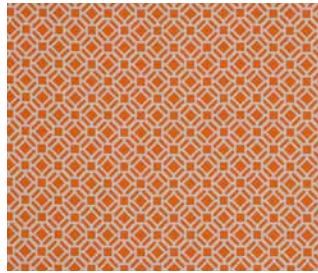


Yasawa Sand

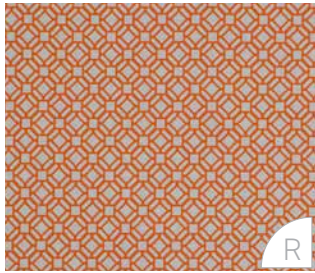


Yasawa Sand | Reverse

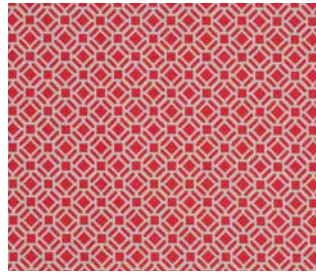
YASAWA



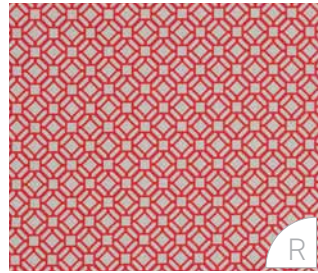
Yasawa Lobster



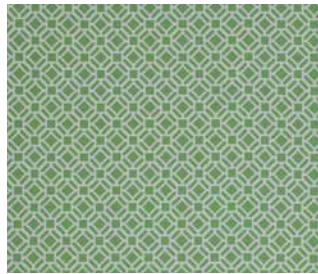
Yasawa Lobster | Reverse



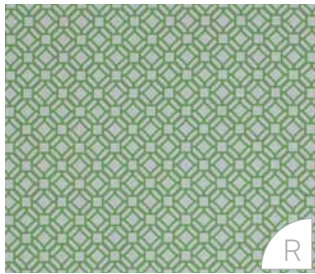
Yasawa Hibiscus



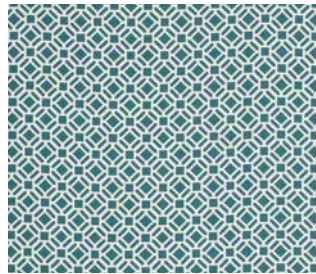
Yasawa Hibiscus | Reverse



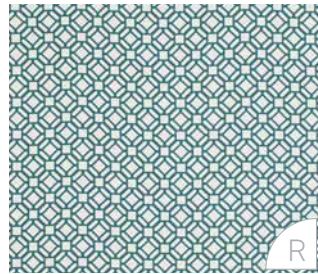
Yasawa Palm



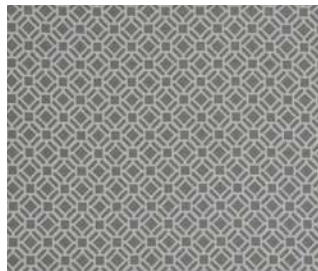
Yasawa Palm | Reverse



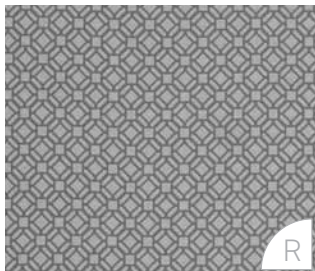
Yasawa Reef



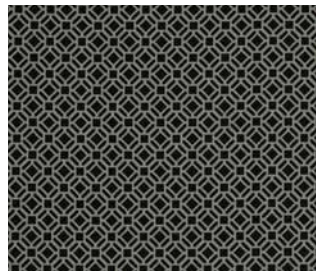
Yasawa Reef | Reverse



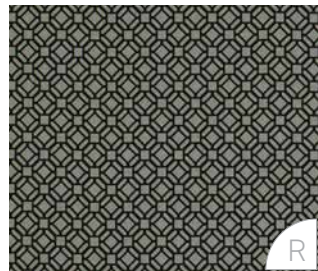
Yasawa Gull



Yasawa Gull | Reverse



Yasawa Basalt



Yasawa Basalt | Reverse



Yasawa Marine



Yasawa Marine | Reverse



Nanuya Sand



Nanuya Sand | Reverse

NANUYA



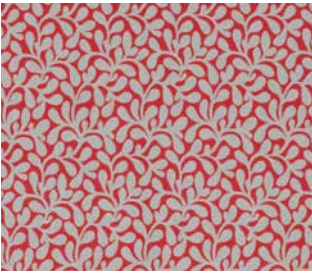
A fun, floral interpretation to lift any outdoor space that has the flexibility to mix and match with its reversible composition.



Nanuya Lobster



Nanuya Lobster | Reverse



Nanuya Hibiscus



Nanuya Hibiscus | Reverse



Nanuya Reef



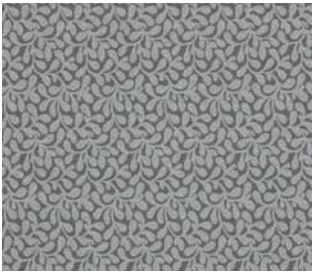
Nanuya Reef | Reverse



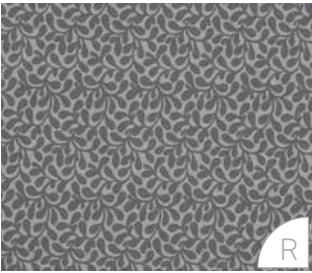
Nanuya Marine



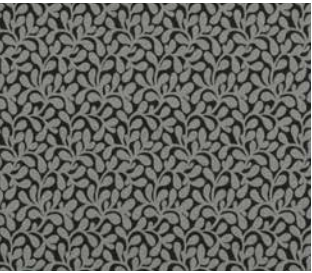
Nanuya Marine | Reverse



Nanuya Gull



Nanuya Gull | Reverse



Nanuya Basalt



Nanuya Basalt | Reverse



Nanuya Palm



Nanuya Palm | Reverse





Tulum Palm



Tulum Palm | Reverse

TULUM



Organically inspired with bold appeal. Designed with a resort sophistication and colour palette to suit poolside entertaining or an alfresco dining space, Tulum is vibrant, flexible and stylish.



Tulum Sand



Tulum Sand | Reverse



Tulum Stone



Tulum Stone | Reverse



Tulum Melon



Tulum Melon | Reverse



Tulum Lobster



Tulum Lobster | Reverse



Tulum Ocean



Tulum Ocean | Reverse



Tulum Marine



Tulum Marine | Reverse



Tulum Pumice



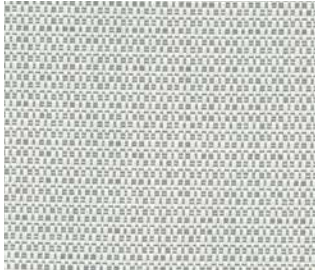
Tulum Pumice | Reverse



Tulum Ash



Tulum Ash | Reverse



Mykonos Cloud



Mykonos Glacier

MYKONOS

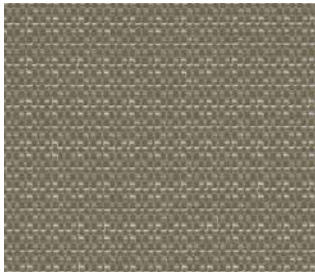
A sleek, tailored aesthetic enhanced with duo-tone colour combinations that will refresh spaces while maintaining functionality with a classic, and refined individuality.



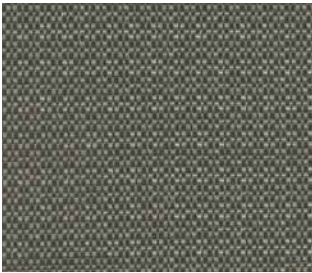
Mykonos Pumice



Mykonos Sand



Mykonos Stone



Mykonos Pewter



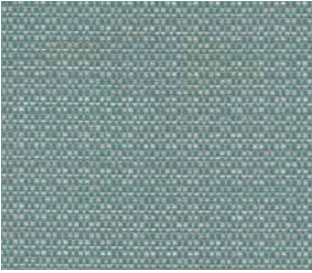
Mykonos Driftwood



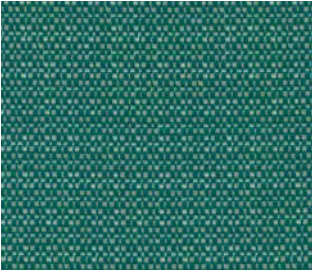
Mykonos Port



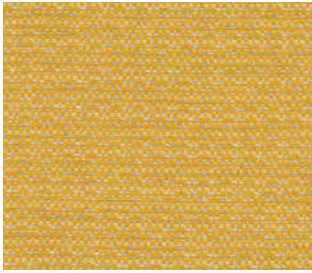
Mykonos Seafoam



Mykonos Ocean



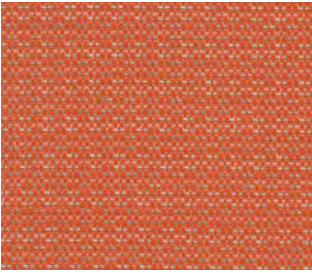
Mykonos Cascade



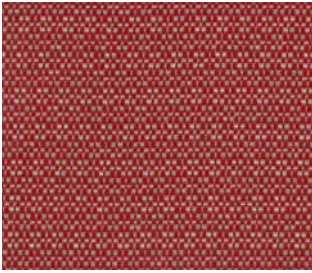
Mykonos Sunshine



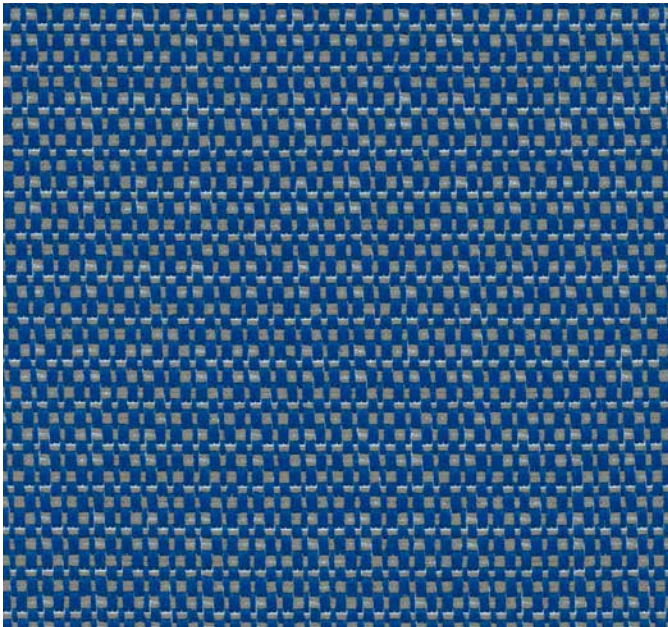
Mykonos Melon



Mykonos Coral



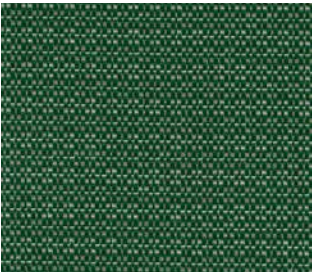
Mykonos Lobster



Mykonos Cobalt



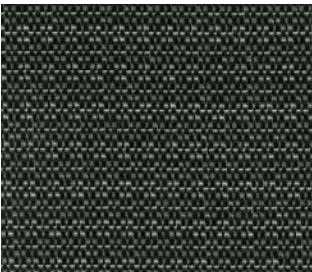
Mykonos Palm



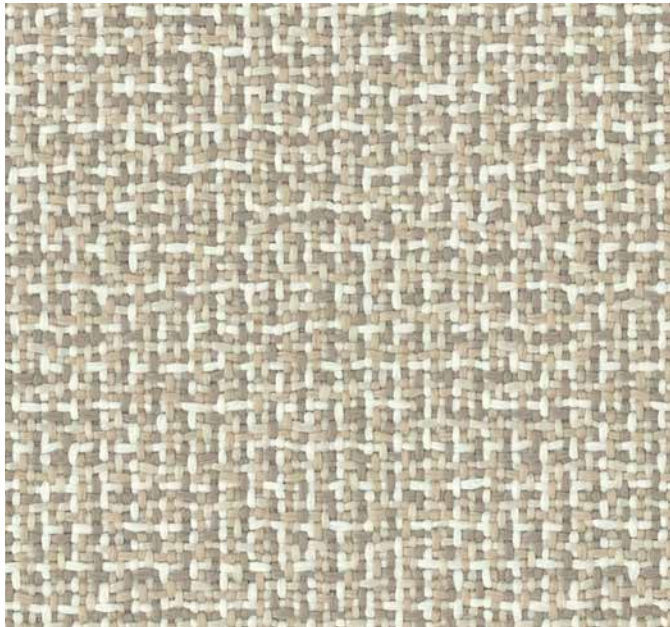
Mykonos Forest



Mykonos Navy



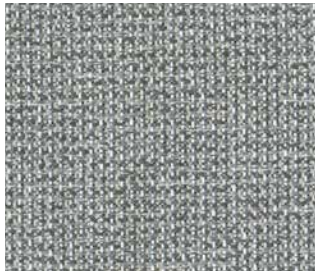
Mykonos Jet



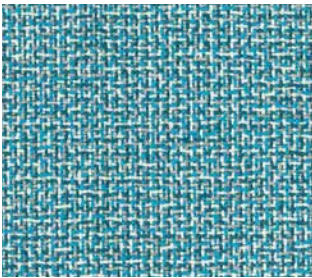
Kuata Sand



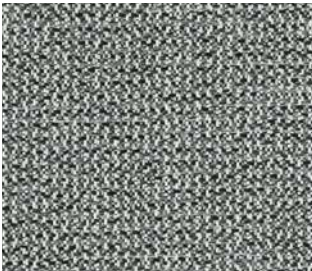
Kuata Driftwood



Kuata Gull



Kuata Reef



Kuata Stone



Kuata Oyster



Kuata Lagoon



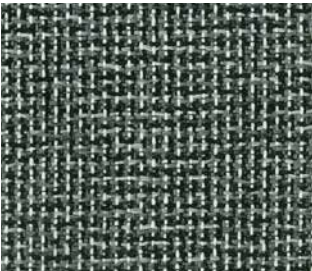
Kuata Basalt



Kuata Pumice



Kuata Marine



Kuata Orca

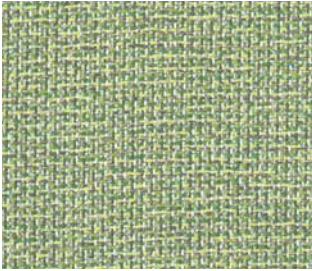


KUATA

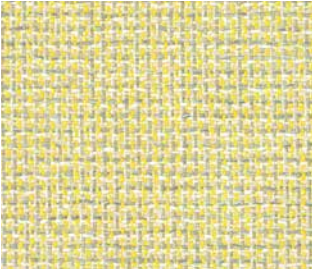
Adaptable for all situations with a carefree textured weave. Contrasting, multi-directional yarns provide the perfect distinction in design that will elevate a space with a curated feel.



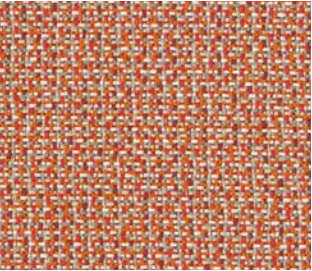
Sofa: Kuata Gull, Cushions: Kuata Lagoon, Kuata Lobster, Kuata Hibiscus, Kuata Palm, Kuata Marine, Kuata Sunshine



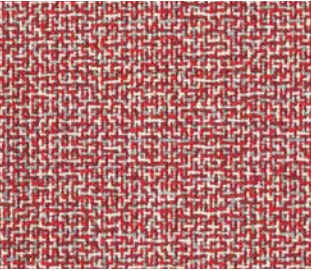
Kuata Palm



Kuata Sunshine



Kuata Lobster



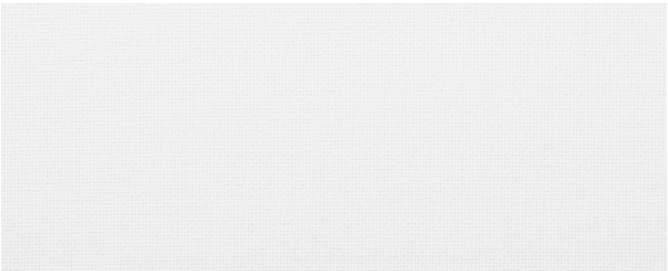
Kuata Hibiscus



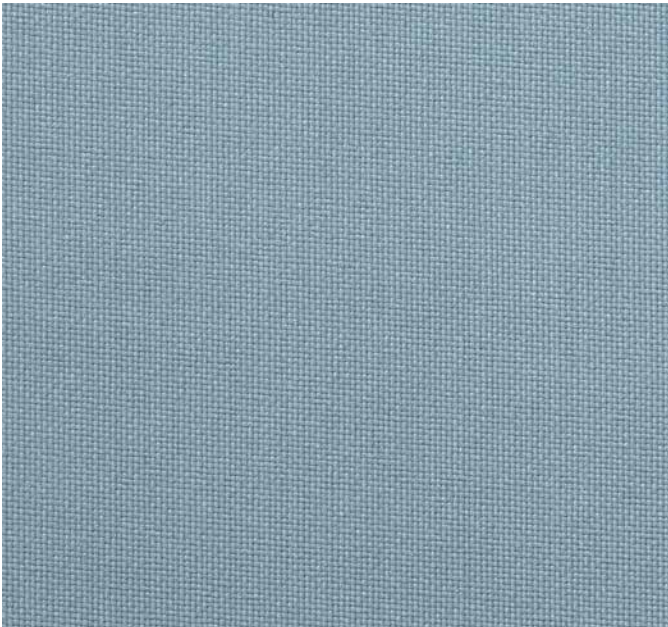
Kona Shell

KONA

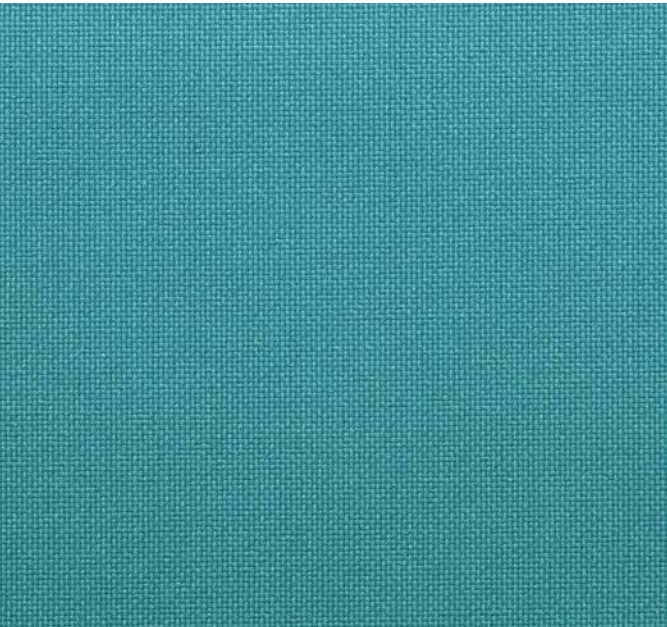
A simple and effective outdoor solution that is complimentary to its surroundings while allowing effortless maintenance.



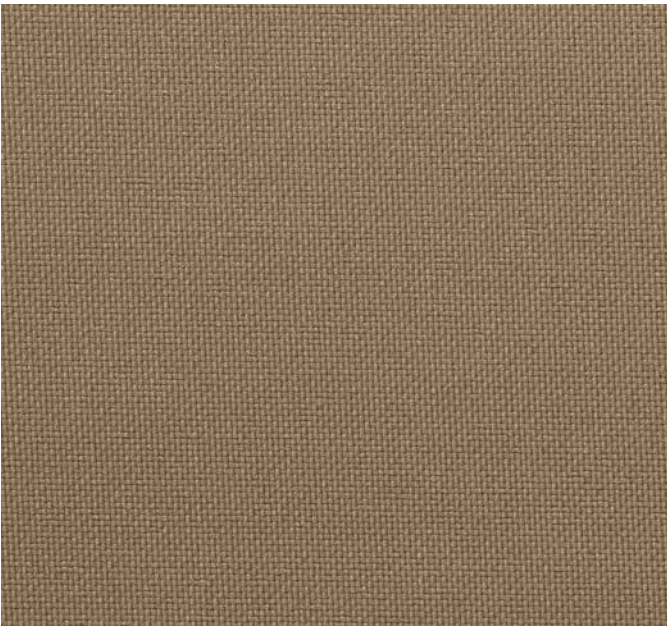
Kona Cloud



Kona Ocean



Kona Turquoise



Kona Tan



Kona Sand



Kona Pumice



Kona Stone



Kona Pebble



Kona Lime



Kona Sunshine



Kona Calippo



Kona Hibiscus



Kona Lagoon



Kona Marine



Kona Navy



Kona Ash



LOMANI

Beautifully textured and available in a wide variety of lifestyle colours, Lomani is an everyday, practical range that has a visual charm with effortless functionality.

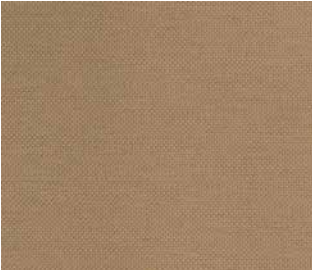
Lomani Cloud



Cushions: Lomani Pebble with Lomani Cloud piping, Lomani Cloud with Lomani Ash piping, Lomani Lime with Lomani Cloud piping.



Lomani Shell



Lomani Sand



Lomani Lime



Lomani Sunshine



Lomani Calippo



Lomani Hibiscus



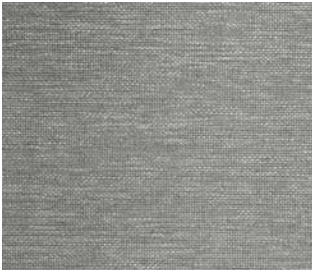
Lomani Ocean



Lomani Lagoon



Lomani Navy



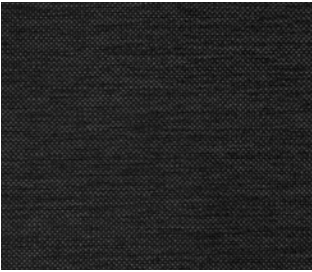
Lomani Pumice



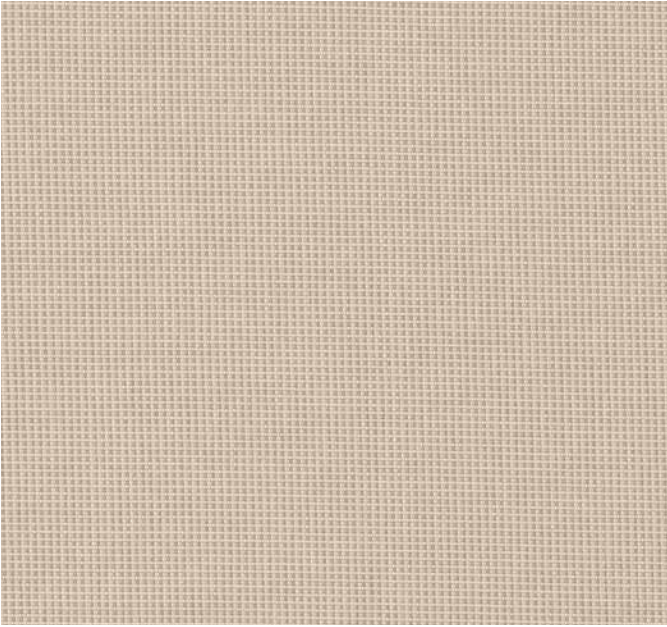
Lomani Stone



Lomani Pebble



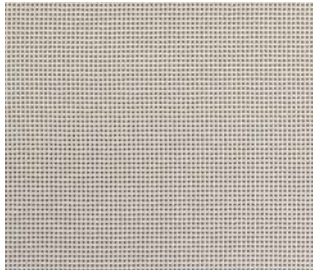
Lomani Ash



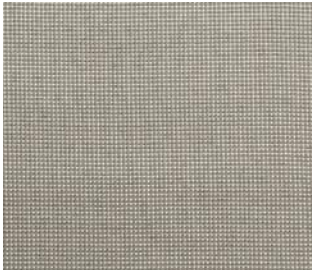
Noosa Shell

NOOSA

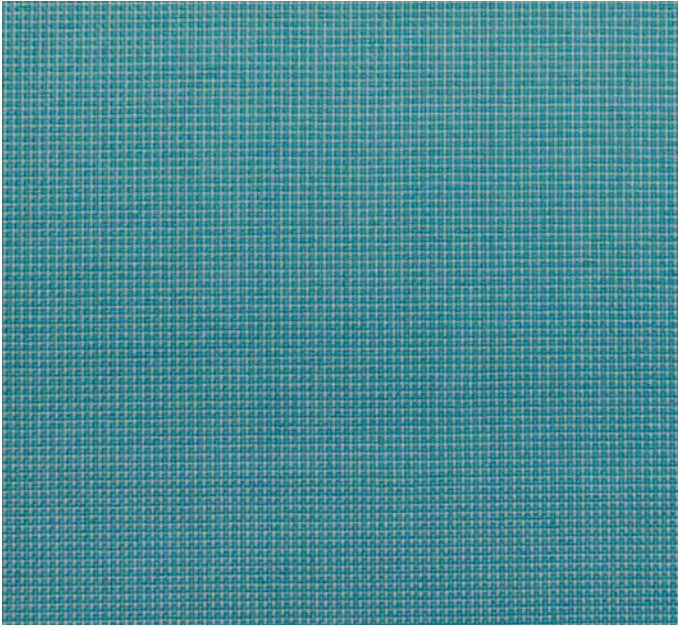
The perfect coordinating palette featuring a duo-tone micro grid, where the art of restraint creates a highly refined and minimalist design aesthetic.



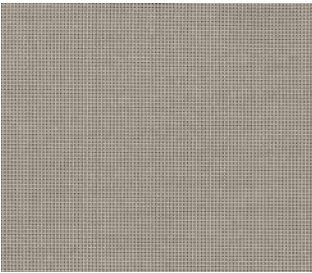
Noosa Natural



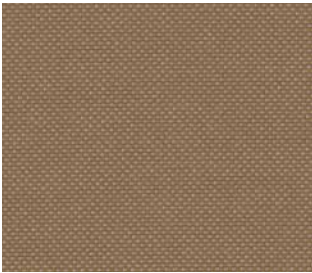
Noosa Stone



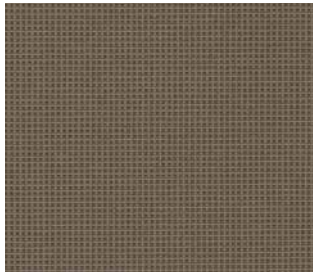
Noosa Turquoise



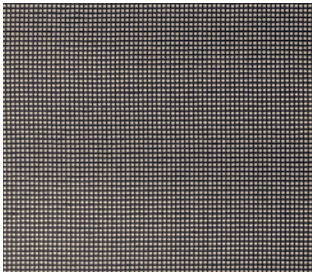
Noosa Pebble



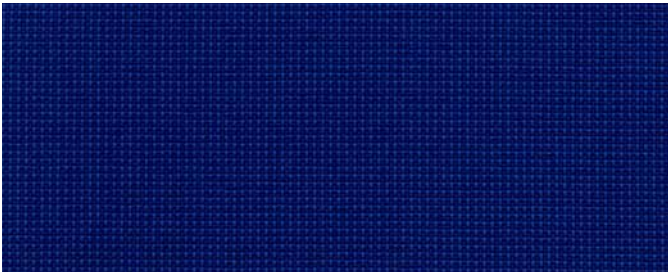
Noosa Sand



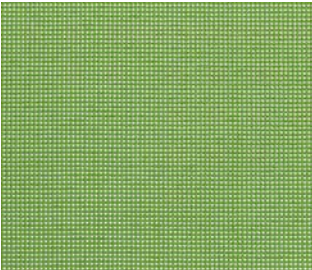
Noosa Shark



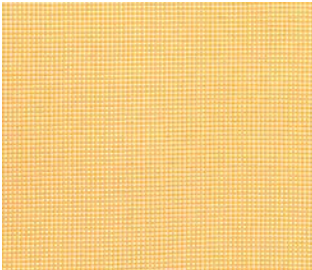
Noosa Ash



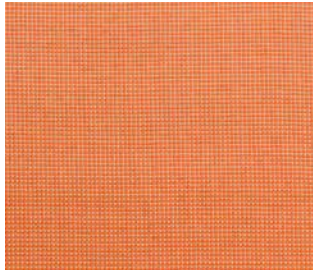
Noosa Marine



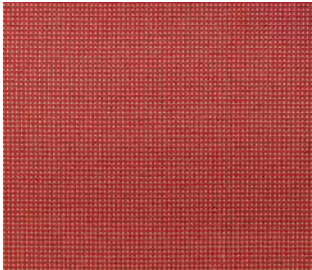
Noosa Lime



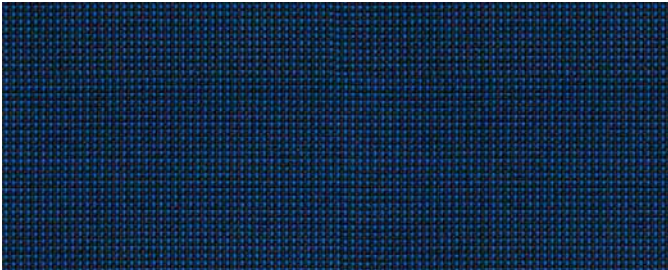
Noosa Sunshine



Noosa Melon



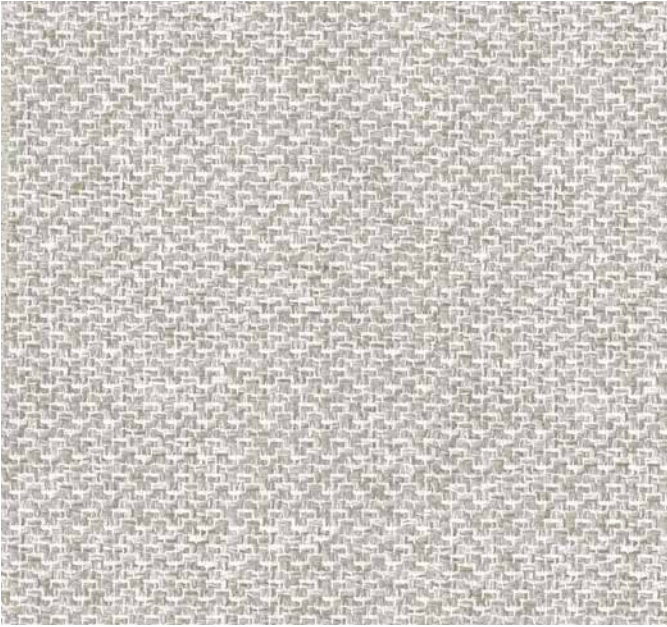
Noosa Lobster



Noosa Navy



Couch: Noosa Turquoise, Cushions: Mallaoota Sunshine, Mallaoota Stone



Macedon Chalk

MACEDON

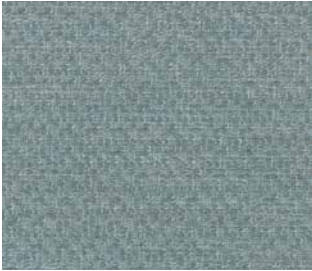
Inspired by the beauty and serenity of the Australian landscape, Macedon is a two-toned, contemporary solution that has a relaxed sophistication with an earthy and modern appeal.



Macedon Possum



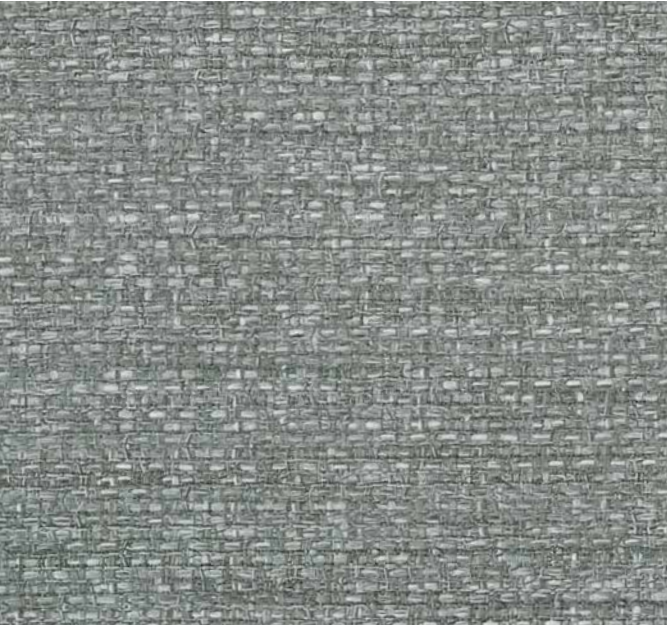
Macedon Birch



Macedon Pool



Macedon Reef



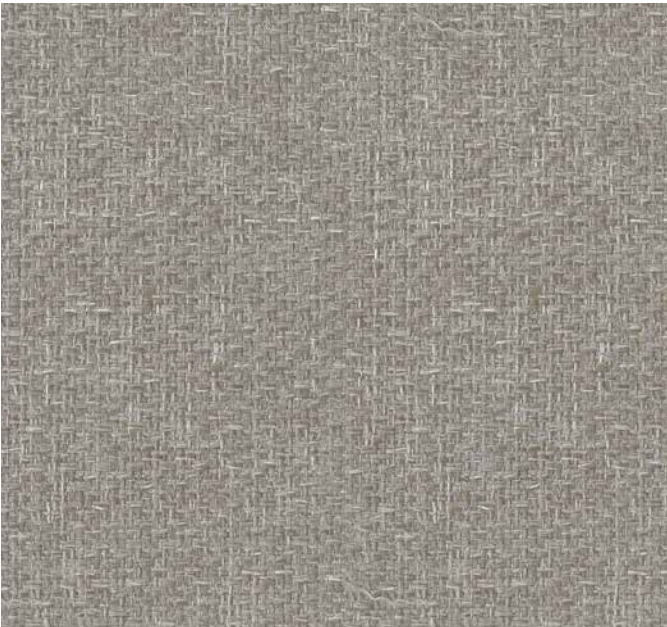
Macedon Pebble



Macedon Sherbet



Macedon Terracotta



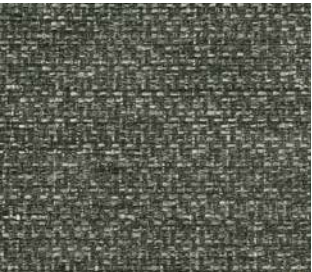
Macedon Fawn



Chair: Macedon Terracotta



Macedon Grass



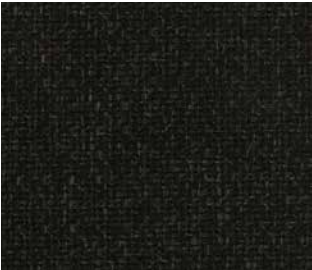
Macedon Panda



Macedon Forest



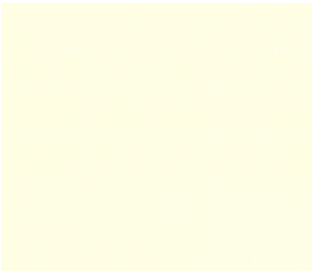
Macedon Navy



Macedon Caviar

LUSTRELL COMMODORE

A micro-scale woven look, mimicking the texture of canvas with a dry, matte finish.



Lustrell Commodore Cloud



Lustrell Admiral Cloud



Lustrell Commodore Fog



Lustrell Admiral Fog



Lustrell Commodore Sand



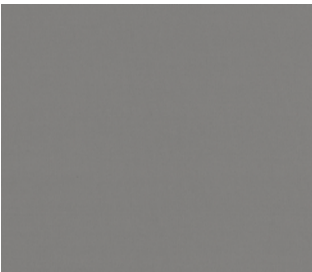
Lustrell Admiral Sand



Lustrell Commodore Driftwood



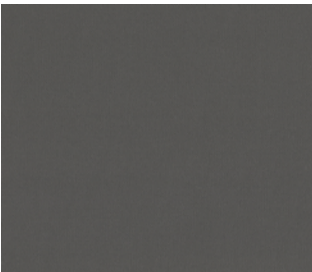
Lustrell Admiral Driftwood



Lustrell Commodore Gull



Lustrell Admiral Gull



Lustrell Commodore Steel



Lustrell Admiral Steel

LUSTRELL ADMIRAL

A smooth, subtly embossed texture with a fine-grained leather look finish.



Lustrell Commodore Lobster



Lustrell Admiral Lobster



Lustrell Commodore Pacific



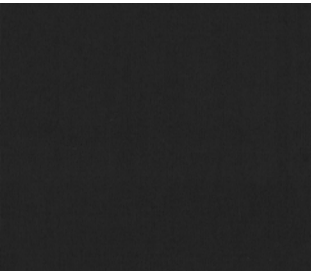
Lustrell Admiral Pacific



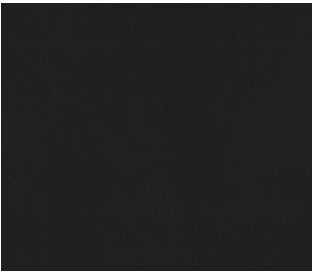
Lustrell Commodore Navy



Lustrell Admiral Navy



Lustrell Commodore Basalt



Lustrell Admiral Basalt



Lustrell Commodore Steel, Lustrell Admiral Steel

Test Results

Specifications	Aldinga	Corozal	Hidalgo	Joss	Requirements
Brand	SUNDEC / Halo	SUNDEC / Halo	SUNDEC / Halo	SUNDEC / Halo	-
Composition	100% Olefin	100% Olefin	100% Olefin	100% Olefin	-
Pattern Repeat (cm)	H:9 x V:10	H:3.5 x V:4	H:Stripe x V:12	H:10.5 x V:18	-
Railroaded	No	No	Yes	Yes	-
Width (cm)	140	150	150	140	-
Weight (gsm)	476	369	369	443	-
Origin	Non EU	Non EU	Non EU	Non EU	-
Stain Repellent	WarGuard	Fluro Chem	Fluro Chem	WarGuard	-
Durability					
Martindale (ISO 12947)	15,000 - 20,000	15,000 - 20,000	15,000 - 20,000	15,000 - 20,000	15,000 - 20,000
Usage	General Domestic	General Domestic	General Domestic	General Domestic	-
Colourfastness					
To Light - Xenon Arc (ISO 105-B02)	>7	>7	>7	>7	Minimum 5
To Rubbing (ISO 105-X12)	Dry 5, Wet 5	Dry 5, Wet 5	Dry 5, Wet 5	Dry 4/5, Wet 5	Minimum Dry 4, Wet 4
To Shampoo (AS2111.19.2)	5	5	5	5	Minimum 4
To Perspiration (ISO 105-E04)	5	5	5	5	Minimum 4
To Water (ISO 105-E01)	5	5	5	5	Minimum 4
To Dry Cleaning Solvent (ISO 105 D01:1993)	5	5	5	5	Minimum 4
To Washing (ISO 105-C06,B15)	5	5	5	5	Minimum 4
To Seawater (ISO 105-E02:1994)	5	5	5	5	-
To Chlorinated water (ISO 105-E03:1994, 5mg/L)	5	5	5	5	-
Pilling					
Pilling (ISO 12945.2)	5	5	5	5	Minimum 3/4
Seam Slippage (ISO 13936.2)					
Warp	4.1	4.1	4.1	4.1	Under 6
Weft	3.1	4.5	4.5	5.2	Under 6
Dimensional chg laundry (AS5077/ISO6330.7BA)					
Warp	0.1	-1.0	-1.0	-0.2	Maximum 5 (+-)
Weft	0.0	-0.3	-0.3	0.3	Maximum 5 (+-)
Dimensional chg hanging (AS26631 B-1997)					
Warp	-	-	-	0.1	-
Weft	-	-	-	0.1	-
Free Formaldehyde					
Free Formaldehyde (ISO 14184-1:1998)	Not Detectable	Not Detectable	Not Detectable	Not Detectable	Under 100ug/g
Fire Hazard Properties (AS1530.3)					
Ignitability Index	13	14	14	14	Range 0-20
Spread of Flame Index	0	0	0	0	Range 0-10
Heat Evolved Index	1	2	2	2	Range 0-10
Smoke Developed Index	3	3	3	5	Range 0-10
Resistance to Mildew					
Resistance to Mildew (AATCC 30, Test III)	No fungal growth observed. Zone of inhibition: 44mm. Anti-fungal activity observed.				

Specifications	Kona	Kuata	Lomani	Lustrell Admiral	Requirements
Brand	SUNDEC / Halo	SUNDEC / Halo	SUNDEC / Halo	SUNDEC / Healthguard / Marine	-
Composition	100% Olefin	100% Olefin	100% Olefin	90% PVC 10% Polyester	-
Pattern Repeat (cm)	Plain	Plain	Plain	Plain	-
Railroaded	Plain	Plain	Plain	Plain	-
Width (cm)	140	140	150	137	-
Weight (gsm)	277	460	277	685	-
Origin	Non EU	Non EU	Non EU	Non EU	-
Stain Repellent	Fluro Chem	WarGuard	Fluro Chem	OnGuard	-
Durability					
Martindale (ISO 12947)	20,000-40,000	42,500 [Wyzen. ASTM D3597]	150,000	150,000	15,000 - 20,000
Usage	Drapery / Heavy Domestic General Commercial	Heavy Commercial	Drapery / Heavy Commercial	Heavy Commercial	-
Colourfastness					
To Light - Xenon Arc (ISO 105-B02)	>7	>7	>6	>7	Minimum 5
To Rubbing (ISO 105-X12)	Dry 5, Wet 5	Dry 5, Wet 5	Dry 4, Wet 5	Dry 5, Wet 5	Minimum Dry 4, Wet 4
To Shampoo (AS2111.19.2)	5	5	5	5	Minimum 4
To Perspiration (ISO 105-E04)	5	-	5	5	Minimum 4
To Water (ISO 105-E01)	5	5	5	5	Minimum 4
To Dry Cleaning Solvent (ISO 105 D01:1993)	5	5	5	-	Minimum 4
To Washing (ISO 105-C06,B15)	5	4	5	-	Minimum 4
To Seawater (ISO 105-E02:1994)	5	5	-	5	-
To Chlorinated water (ISO 105-E03:1994, 5mg/L)	5	-	-	-	-
Pilling					
Pilling (ISO 12945.2)	5	5	5	-	Minimum 3/4
Seam Slippage (ISO 13936.2)					
Warp	2.6	3.3	2.0	2.0	Under 6
Weft	2.8	1.9	2.0	2.0	Under 6
Dimensional chg laundry (AS5077/ISO6330.7BA)					
Warp	-0.3	-	0.4	-	Maximum 5 (+-)
Weft	-0.1	-	0.3	-	Maximum 5 (+-)
Dimensional chg hanging (AS26631 B-1997)					
Warp	0.0	-	0.0	-	-
Weft	0.0	-	0.0	-	-
Free Formaldehyde					
Free Formaldehyde (ISO 14184-1:1998)	Not Detectable	Not Detectable	Not Detectable	Not Detectable	Under 100ug/g
Fire Hazard Properties (AS1530.3)					
Ignitability Index	13	13	13	13	Range 0-20
Spread of Flame Index	0	0	0	0	Range 0-10
Heat Evolved Index	2	1	2	1	Range 0-10
Smoke Developed Index	2	5	2	7	Range 0-10
Resistance to Mildew					
Resistance to Mildew (AATCC 30, Test III)	No fungal growth observed. Zone of inhibition: 44mm. Anti-fungal activity observed.				

Specifications	Lustrell Commodore	Macedon	Magnetic	Maldives	Requirements
Brand	SUNDEC / Healthguard / Marine	SUNDEC / Halo	SUNDEC / Halo / Encore	SUNDEC / Halo	-
Composition	92% PVC 8% Polyester	100% Olefin	93% Recycled Olefin 7% Polyester	100% Olefin	-
Pattern Repeat (cm)	Plain	Plain	H:2.5 x V:2	Plain	-
Railroaded	Plain	Plain	No	Plain	-
Width (cm)	137	140	140	140	-
Weight (gsm)	747	418	447	487	-
Origin	Non Eu	Non Eu	Non EU	Non EU	-
Stain Repellent	OnGuard	Fluro chem	WarGuard	WarGuard	-
Durability					
Martindale (ISO 12947)	150,000	20,000 - 40,000	20,000 - 40,000	20,000 - 40,000	15,000 - 20,000
Usage	Heavy Commercial	General Commercial / Heavy Domestic	General Commercial / Heavy Domestic	General Commercial / Heavy Domestic	-
Colourfastness					
To Light - Xenon Arc (ISO 105-B02)	>7	>7	6/7	>7	Minimum 5
To Rubbing (ISO 105-X12)	Dry 5, Wet 5	Dry 4/5, Wet 5	Dry 4/5, Wet 4/5	Dry 4/5, Wet 4/5	Minimum Dry 4, Wet 4
To Shampoo (AS2111.19.2)	5	5	5	5	Minimum 4
To Perspiration (ISO 105-E04)	5	5	5	5	Minimum 4
To Water (ISO 105-E01)	5	5	5	5	Minimum 4
To Dry Cleaning Solvent (ISO 105D01:1993)	-	5	5	5	Minimum 4
To Washing (ISO 105-C06,B1S)	-	5	5	5	Minimum 4
To Seawater (ISO 105-E02:1994)	5	5	-	5	-
To Chlorinated water (ISO 105-E03:1994, 5mg/L)	-	5	-	5	-
Pilling					
Pilling (ISO 12945.2)	-	5	4/5	5	Minimum 3/4
Seam Slippage (ISO 13936.2)					
Warp	3.8	3.1	5.0	3.2	Under 6
Weft	3.9	3.5	5.0	5.3	Under 6
Dimensional chg launder (AS5077/ISO6330.7BA)					
Warp	-	-	-0.5	0.0	Maximum 5 (+-)
Weft	-	-	-0.1	0.0	Maximum 5 (+-)
Dimensional chg hanging (AS26631 B-1997)					
Warp	-	-	-	0.0	-
Weft	-	-	-	0.0	-
Free Formaldehyde					
Free Formaldehyde (ISO 14184-1:1998)	Not Detectable	Not Detectable	Not Detectable	Not Detectable	Under 100ug/g
Fire Hazard Properties (AS1530.3)					
Ignitability Index	18	14	14	14	Range 0-20
Spread of Flame Index	0	0	0	0	Range 0-10
Heat Evolved Index	1	2	1	2	Range 0-10
Smoke Developed Index	6	2	3	3	Range 0-10
Resistance to Mildew					
Resistance to Mildew (AATCC 30, Test III)	No fungal growth observed. Zone of inhibition: 44mm. Anti-fungal activity observed.				

Specifications	Mallacoota	Matacawa	McCrae	Mykonos	Requirements
Brand	SUNDEC / Halo / Reversible	SUNDEC / Halo	SUNDEC / Halo	SUNDEC / Halo	-
Composition	100% Olefin	100% Olefin	100% Olefin	100% Olefin	-
Pattern Repeat (cm)	H:Stripe x V:13	H:4.5 x V:4.5	H:34.5 x V:34.5	Plain	-
Railroaded	Yes	No	Yes	Plain	-
Width (cm)	140	140	140	150	-
Weight (gsm)	310	303	443	357	-
Origin	Non EU	Non EU	Non EU	Non EU	-
Stain Repellent	Fluro Chem	Fluro Chem	WarGuard	Fluro Chem	-
Durability					
Martindale (ISO 12947)	15,000 - 20,000	15,000 - 20,000	15,000 - 20,000	20,000 - 40,000	15,000 - 20,000
Usage	General Domestic	Drapery / General Domestic	General Domestic	Heavy Domestic / General Commercial	-
Colourfastness					
To Light - Xenon Arc (ISO 105-B02)	>6	>7	>7	>7	Minimum 5
To Rubbing (ISO 105-X12)	Dry 4/5, Wet 4/5	Dry 5, Wet 5	Dry 4/5, Wet 5	Dry 5, Wet 5	Minimum Dry 4, Wet 4
To Shampoo (AS2111.19.2)	5	5	5	5	Minimum 4
To Perspiration (ISO 105-E04)	5	5	5	5	Minimum 4
To Water (ISO 105-E01)	5	5	5	5	Minimum 4
To Dry Cleaning Solvent (ISO 105D01:1993)	5	5	5	5	Minimum 4
To Washing (ISO 105-C06,B1S)	5	5	5	5	Minimum 4
To Seawater (ISO 105-E02:1994)	5	5	5	5	-
To Chlorinated water (ISO 105-E03:1994, 5mg/L)	5	5	5	-	-
Pilling					
Pilling (ISO 12945.2)	5	5	5	5	Minimum 3/4
Seam Slippage (ISO 13936.2)					
Warp	3.0	4.3	4.1	3.8	Under 6
Weft	2.8	4.0	5.2	3.8	Under 6
Dimensional chg launder (AS5077/ISO6330.7BA)					
Warp	-0.3	-0.6	-0.2	-0.7	Maximum 5 (+-)
Weft	-0.2	-0.3	0.3	-1.4	Maximum 5 (+-)
Dimensional chg hanging (AS26631 B-1997)					
Warp	0.0	0.2	0.1	-	-
Weft	0.0	0.2	0.1	-	-
Free Formaldehyde					
Free Formaldehyde (ISO 14184-1:1998)	Not Detectable	Not Detectable	Not Detectable	Not Detectable	Under 100ug/g
Fire Hazard Properties (AS1530.3)					
Ignitability Index	13	16	14	13	Range 0-20
Spread of Flame Index	0	0	0	0	Range 0-10
Heat Evolved Index	2	0	2	1	Range 0-10
Smoke Developed Index	2	3	5	5	Range 0-10
Resistance to Mildew					
Resistance to Mildew (AATCC 30, Test III)	No fungal growth observed. Zone of inhibition: 44mm. Anti-fungal activity observed.				

Specifications	Nanuya	Nimbin	Noosa	Palo	Requirements
Brand	SUNDEC / Halo	SUNDEC / Halo	SUNDEC / Halo	SUNDEC / Halo / Reversible	-
Composition	100% Olefin	100% Olefin	100% Olefin	100% Olefin	-
Pattern Repeat (cm)	H:12 x V:23	Stripe	Plain	H:2.5 x V:1.5	-
Railroaded	No	Plain	Plain	No	-
Width (cm)	140	140	140	150	-
Weight (gsm)	303	456	227	369	-
Origin	Non EU	Non EU	Non EU	Non EU	-
Stain Repellent	Fluro Chem	WarGuard	Fluro Chem	Fluro Chem	-
Durability					
Martindale (ISO 12947)	15,000 - 20,000	20,000 - 40,000	15,000 - 20,000	15,000 - 20,000	15,000 - 20,000
Usage	Drapery / General Domestic	General Commercial / Heavy Domestic	Drapery / General Domestic	General Domestic	-
Colourfastness					
To Light - Xenon Arc (ISO 105-B02)	>7	>7	>6	>7	Minimum 5
To Rubbing (ISO 105-X12)	Dry 5, Wet 5	Dry 4/5, Wet 4/5	Dry 5, Wet 5	Dry 5, Wet 5	Minimum Dry 4, Wet 4
To Shampoo (AS2111.19.2)	5	5	5	5	Minimum 4
To Perspiration (ISO 105-E04)	5	5	-	5	Minimum 4
To Water (ISO 105-E01)	5	5	5	5	Minimum 4
To Dry Cleaning Solvent (ISO 105 D01:1993)	5	5	5	5	Minimum 4
To Washing (ISO 105-C06,B1S)	5	5	5	5	Minimum 4
To Seawater (ISO 105-E02:1994)	5	5	-	5	-
To Chlorinated water (ISO 105-E03:1994, 5mg/L)	5	5	-	5	-
Pilling					
Pilling (ISO 12945.2)	5	5	5	5	Minimum 3/4
Seam Slippage (ISO 13936.2)					
Warp	4.3	3.2	2.0	4.1	Under 6
Weft	4.0	5.3	2.0	4.5	Under 6
Dimensional chg/launder (AS5077/ISO6330.7BA)					
Warp	-0.6	0.0	0.0	-1.0	Maximum 5 (+-)
Weft	-0.3	0.0	0.0	-0.3	Maximum 5 (+-)
Dimensional chg hanging (AS26631 B-1997)					
Warp	0.2	0.0	0.0	-	-
Weft	0.2	0.0	0.0	-	-
Free Formaldehyde					
Free Formaldehyde (ISO 14184-1:1998)	Not Detectable	Not Detectable	Not Detectable	Not Detectable	Under 100ug/g
Fire Hazard Properties (AS1530.3)					
Ignitability Index	16	14	13	14	Range 0-20
Spread of Flame Index	0	0	0	0	Range 0-10
Heat Evolved Index	0	2	2	2	Range 0-10
Smoke Developed Index	3	3	2	3	Range 0-10
Resistance to Mildew					
Resistance to Mildew (AATCC 30, Test III)	No fungal growth observed. Zone of inhibition: 44mm. Anti-fungal activity observed.				

Specifications	Portsea	Rottnest	Sosa	Stradbroke	Requirements
Brand	SUNDEC / Halo	SUNDEC / Halo / Encore	SUNDEC / Halo / Reversible	SUNDEC / Halo / Encore	-
Composition	100% Olefin	88% Recycled Olefin 12% Recycled Polyester	100% Olefin	93% Recycled Olefin 7% Polyester	-
Pattern Repeat (cm)	H:11 x V:Stripe	Plain	H:9.5 x V:10	Plain	-
Railroaded	No	Plain	No	Plain	-
Width (cm)	150	140	150	140	-
Weight (gsm)	240	510	369	465	-
Origin	Non EU	Non EU	Non EU	Non EU	-
Stain Repellent	Fluro Chem	WarGuard	Fluro Chem	WarGuard	-
Durability					
Martindale (ISO 12947)	15,000 - 20,000	70,000	15,000 - 20,000	20,000 - 40,000	15,000 - 20,000
Usage	Drapery / General Domestic	Heavy Commercial	General Domestic	General Commercial / Heavy Domestic	-
Colourfastness					
To Light - Xenon Arc (ISO 105-B02)	7	>7	>7	6/7	Minimum 5
To Rubbing (ISO 105-X12)	Dry 5, Wet 5	Dry 5, Wet 5	Dry 5, Wet 5	Dry 4/5, Wet 4/5	Minimum Dry 4, Wet 4
To Shampoo (AS2111.19.2)	5	5	5	4/5	Minimum 4
To Perspiration (ISO 105-E04)	5	5	5	4/5	Minimum 4
To Water (ISO 105-E01)	5	5	5	4/5	Minimum 4
To Dry Cleaning Solvent (ISO 105 D01:1993)	5	5	5	4/5	Minimum 4
To Washing (ISO 105-C06,B1S)	5	5	5	4/5	Minimum 4
To Seawater (ISO 105-E02:1994)	-	5	5	4/5	-
To Chlorinated water (ISO 105-E03:1994, 5mg/L)	-	5	5	4/5	-
Pilling					
Pilling (ISO 12945.2)	5	5	5	4/5	Minimum 3/4
Seam Slippage (ISO 13936.2)					
Warp	3.9	0.0	4.1	5.0	Under 6
Weft	3.0	0.0	4.5	5.0	Under 6
Dimensional chg/launder (AS5077/ISO6330.7BA)					
Warp	-0.2	-0.9	-1.0	-0.5	Maximum 5 (+-)
Weft	0.1	-0.8	-0.3	-0.1	Maximum 5 (+-)
Dimensional chg hanging (AS26631 B-1997)					
Warp	0.1	-	-	-	-
Weft	0.4	-	-	-	-
Free Formaldehyde					
Free Formaldehyde (ISO 14184-1:1998)	Not Detectable	Not Detectable	Not Detectable	Not Detectable	Under 100ug/g
Fire Hazard Properties (AS1530.3)					
Ignitability Index	13	14	14	14	Range 0-20
Spread of Flame Index	0	0	0	0	Range 0-10
Heat Evolved Index	1	2	2	2	Range 0-10
Smoke Developed Index	4	4	3	3	Range 0-10
Resistance to Mildew					
Resistance to Mildew (AATCC 30, Test III)	No fungal growth observed. Zone of inhibition: 44mm. Anti-fungal activity observed.				

Specifications	Tulum	Willa	Yasawa	Requirements
Brand	SUNDEC / Halo / Reversible	SUNDEC / Halo	SUNDEC / Halo / Reversible	-
Composition	100% Olefin	100% Olefin	100% Olefin	-
Pattern Repeat (cm)	H:35 x V:25	H:Stripe x V:10.7	H:9 x V:9	-
Railroaded	No	Yes	No	-
Width (cm)	140	140	140	-
Weight (gsm)	310	269	303	-
Origin	Non EU	Non EU	Non EU	-
Stain Repellent	Fluro Chem	WarGuard	Fluro Chem	-
Durability				
Martindale (ISO 12947)	15,000 - 20,000	15,000 - 20,000	15,000 - 20,000	15,000 - 20,000
Usage	Drapery / General Domestic	General Domestic	Drapery / General Domestic	-
Colourfastness				
To Light - Xenon Arc (ISO 105-B02)	>6	>7	>7	Minimum 5
To Rubbing (ISO 105-X12)	Dry 4/5, Wet 4/5	Dry 4/5, Wet 5	Dry 5, Wet 5	Minimum Dry 4, Wet 4
To Shampoo (AS2111.19.2)	5	5	5	Minimum 4
To Perspiration (ISO 105-E04)	5	5	5	Minimum 4
To Water (ISO 105-E01)	5	5	5	Minimum 4
To Dry Cleaning Solvent (ISO 105 D01:1993)	5	5	5	Minimum 4
To Washing (ISO 105-C06,B15)	5	5	5	Minimum 4
To Seawater (ISO 105-E02:1994)	-	5	5	-
To Chlorinated water (ISO 105-E03:1994, 5mg/L)	-	5	5	-
Pilling				
Pilling (ISO 12945.2)	5	5	5	Minimum 3/4
Seam Slippage (ISO 13936.2)				
Warp	3	5.9	4.3	Under 6
Weft	2.8	3.6	4	Under 6
Dimensional chg laundry (AS5077/ISO6330.7BA)				
Warp	-0.3	-0.6	-0.6	Maximum 5 (+-)
Weft	-0.2	-0.3	-0.3	Maximum 5 (+-)
Dimensional chg hanging (AS26631 B-1997)				
Warp	0.0	-	0.2	-
Weft	0.0	-	0.2	-
Free Formaldehyde				
Free Formaldehyde (ISO 14184-1:1998)	Not Detectable	Not Detectable	Not Detectable	Under 100ug/g
Fire Hazard Properties (AS1530.3)				
Ignitability Index	13	14	16	Range 0-20
Spread of Flame Index	0	0	0	Range 0-10
Heat Evolved Index	2	2	0	Range 0-10
Smoke Developed Index	2	3	3	Range 0-10
Resistance to Mildew				
Resistance to Mildew (AATCC 30, Test III)	No fungal growth observed. Zone of inhibition: 44mm. Anti-fungal activity observed.			

Chair: Matacawa Basalt, Cushions on chair: Kuata Oyster, Yasawa Reef, Sofa: Kuata Gull, Cushions on Sofa: Kuata Lagoon, Matacawa Marine, Yasawa Basalt, Nanuya Reef, Kuata Oyster, Matacawa Reef, Yasawa Marine, Ottoman (left): Nanuya Basalt, Kuata Basalt, Ottoman (right): Yasawa Reef, Kuata Reef



SUNDEC®

Care Information

REGULAR CARE

Where possible store away from direct sunlight when not in use to prolong fabric life. Vacuum regularly using low suction. Rotate reversible cushions regularly. Please note a dirty surface promotes mildew growth, so please keep your fabrics clean.

CLEANING

If cleaning with a hot-water extraction machine (hot), do not remove cushion covers for separate cleaning even though they have zippers. Professional cleaning recommended. Use only upholstery detergent. Do not wet filling. Allow to naturally dry before re-use.

OR

May be shampoo cleaned using upholstery shampoo only. Do not use dishwashing or laundry detergents. Do not wet filling. Do not scrub with stiff brush. Allow to naturally dry before re-use.

SPOT CLEANING

Treat spills and stains as soon as possible. Gently scrape soil or mop liquid from the surface of the fabric. Do not scrub. Apply proprietary cleaning agents strictly according to instructions to remove the residue of the spill. Do not saturate the fabric or interior with water or other cleaning liquids. May be spot cleaned with dry cleaning solvent.

WASHING INSTRUCTIONS

If your covers are too bulky for your machine we recommend professional washing by your local laundry. Use a gentle cycle and do not wash the fabric at a temperature exceeding 40 degrees. Use a washing agent that does not contain optical brighteners and which is suitable for colour retention such as Earth Choice (3 X Ultra concentrate liquid), or Eco Store Laundry Powder or Omo Colour.

Warning: Do not use washing agents containing any optical brighteners, as this may affect colour, particularly if cushions

and main cover are not washed at the same time. Do not mix different colours or fabrics in the wash. Do not squeeze or wring by hand. Do not apply detergent directly to covers when washing. Covers with zippers do not necessarily mean that the covers are removable; once removed the covers may be difficult to replace depending on the style of furniture.

NOTE: Some minor colour change may occur in the initial washing stages. We recommend laundering or dry cleaning in complete cover sets to ensure there is no colour variation between cushions and main covers.

DRYING INSTRUCTIONS

To reduce risk of shrinkage, line drying only should be used. Do not line dry in direct sunlight as this may accelerate colour loss. Do not tumble dry. Ironing should not be necessary, but if required, iron on the reverse side using a low temperature.

BLEACH CLEANING/ DISINFECTING

Mix 5% of household bleach (sodium hypochlorite) with 95% water (One 250mL cup of household bleach in 5L of water). Pre-test cleaning method on a hidden part of the furniture. The bleach solution can remain on the fabric surface for up to 10-minutes after which the bleach solution must be thoroughly rinsed from the fabric using a water extraction machine filled with cold water. Once thoroughly rinsed, extract any residual moisture and allow to dry at room temperature. Furniture must be dry before being reused.

WARNING: Sodium hypochlorite bleach is corrosive. Avoid contact with the skin. Use PVC gloves and follow the safety instructions of the bleach manufacturer. Please also be mindful not to apply the bleach solution to the frame of the furniture or any floor coverings without further testing.

*The above cleaning instructions apply to all Sundec products, excluding Lustrell Admiral and Lustrell Commodore. For Lustrell Outdoor cleaning instructions, please see opposite page.

LUSTRELL OUTDOOR

Care Information

REGULAR CARE

Where possible store away from direct sunlight when not in use to prolong vinyl life. Keep at a minimum of 30cm (12 inches) away from direct heat sources and routinely vacuum with a soft brush attachment to remove airborne particles and wipe with a damp sponge or cloth. We recommend the use of proprietary branded leather conditioner and protector to protect against build-up of grime and premature wear. Please note a dirty surface promotes mildew growth, so vinyls need to be maintained and cleaned regularly. Additionally when in contact with salt and chlorine environments the vinyl should be rinsed or wiped with clean water after each use to remove any residue.

CLEANING

Blot liquid spills with a clean dry cloth. Wipe with a clean cloth dampened with warm water. Clean using a proprietary brand leather cleaner. Do not use abrasive powder, detergent based or paste cleaners. Do not wet excessively, especially around seam edges. A soft bristle brush may be used to remove ingrained soil. Avoid scratching by gentle brushing. Wipe with a clean cloth dampened with water to remove residues. Dry in shade away from direct heat. Do not clean with hot water extraction machine. Do not clean with on-site dry-cleaning machine.

SPOT CLEANING

Clean as above. For persistent marks seek professional advice.

BLEACH CLEANING/ DISINFECTING

Mix 5% of household bleach (sodium hypochlorite) with 95% water (One 250mL cup of household bleach in 5L of water). Pre-test cleaning method on a hidden part of the furniture. The bleach solution can remain on the vinyl surface for up to 10-minutes after which the bleach solution must be thoroughly rinsed. To rinse, wipe the surface several times with a cloth wet with clean cold water and allow to dry at room temperature. Furniture must be dry before being reused.

WARNING: Sodium hypochlorite bleach is corrosive. Avoid contact with the skin. Use PVC gloves and follow the safety instructions of the bleach manufacturer. Please also be mindful not to apply the bleach solution to the frame of the furniture or any floor coverings without further testing. Please be aware of the environment when cleaning with bleach. Bleach can have harmful effects on the natural environment around you. We do not advise using bleach if you are surrounded by a body of water or other environment that could be affected.

WARNING: Please note silicone based cleaners should not be used.

Since 1966 Warwick have supplied fine furnishing fabrics which have been quality tested to world standards for performance, durability and safety.

For a period of three years, for both domestic and commercial applications, we guarantee to replace any fabric which is found to be faulty as a result of manufacturing defect and which has been used in accordance with our performance ratings and care instructions.

The Warwick Quality Guarantee is additional to all statutory rights and remedies that are available to our customers under Australian Consumer Law.

In the event of any fabric claim Warwick customers will be provided with a comprehensive service form to be completed and returned to Warwick to facilitate prompt processing.

Full terms and conditions of the Warwick Quality Guarantee are available upon request.

Australia

T 1300 787 888
(toll free in Australia)
F +61 (0) 3 9415 7236
F +61 (0) 3 9416 1060
info@warwick.com.au
www.warwick.com.au

New Zealand

T +64 (0) 9 477 3080
F +64 (0) 9 479 6313
info@warwick.co.nz
www.warwick.co.nz

United Kingdom

T +44 (0) 1451 822 383
F +44 (0) 1451 822 369
info@warwick.co.uk
www.warwick.co.uk

