

# WARWICK

TREND FORECAST 2023



## 2023 FORECAST

The Warwick Trend Forecast for 2023 collates four enduring stories. Interchangeable and allowing for a thoughtful selection of texture, colour and shape, attention to detail is key. With an emphasis on quality and respect for craftsmanship, curated and considered design is embraced to highlight unique styles.



Our in-house design team is truly unique, designing and developing product with the highest level of creativity and latest technology.

Based in Collingwood, Melbourne, our team skilfully develops product, from sketching original design concepts to developing colour lines, and following stringent testing procedures to ensure our product meets the highest Australian standards.





## NEW EURO

Parisian sophistication and vintage elegance are combined to create impactful spaces, blending traditional heritage with modern shape. A curated approach with simple, considered design balances decorative flourishes and sculpted furniture.



## NEW EURO



Duke Berry



Casimir Blush



Duke Petal



Aurelius Blush



Duke Camel



Emporium Sage



Pelle Ivory



Aurelius Snow



Omni Navy



Casimir Atlantic



Omni Atoll



Tesoro Ash









## RETRO REFLECT

Embodying deep nostalgia and bringing comfort through the familiar, RETRO REFLECT reinterprets 70s design for contemporary life. With an appreciation for quality and craft, it welcomes a tailored yet relaxed, and truly customised aesthetic.



## RETRO REFLECT



Ovis Ivory



Lustrell Charisma Buff



Pelle Tan



Novara Spice



Eames Parchment



Orion Dijon



Kiama Fern



Verona Olive



Kiama Taupe



Cruze Chestnut



Chambray Charcoal



Verona Coffee







## SENSESCAPE

An immersive experience to escape from the everyday, Sensescape is brave and bold. Embracing the digital age and the creativity that new technology grants us, experiment with bright colour, fantastical blooms and abstract form.





# SENSESCAPE



Vander Eggshell



Mecca Diamond



Clique Brick



Augustus Mustard



Panay Mint



Clique Teal



Lustrell Charisma Breeze



Orion Feather



Pollex Orchid



Lustrell Charisma Cabernet



Pollex Atlantic



Novara Baltic





## PRIMITIVE

Embracing the elements that connect us – nature, community, our collective heritage - to create spaces that provide a place of respite, to ground and nurture. Finding comfort in the familiar, PRIMITIVE is a carefully curated selection of perfectly imperfect pieces.



## PRIMITIVE



Olympia Snow



Emery Angora



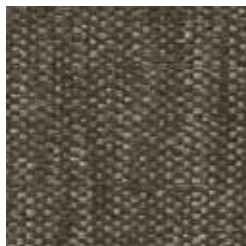
Chambray Oyster



Guggenheim Chrome



Chambray Mocha



Verona Bison



Guggenheim Quartz



Augustus Linen



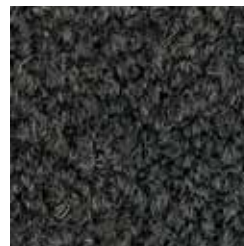
Olympia Stone



Emery Dove



Augustus Wolf



Fabio Charcoal





# Continue the Journey

Visit our website

[Order cuttings](#) [Place an order](#) [Virtual Reality](#)



Visit our showroom

## **Adelaide**

103 Wright Street  
Adelaide SA 5000

Weekdays: 9.00am-5.00pm  
Saturday: 10.00am-3.00pm

## **Brisbane**

54 Robertson Street  
Fortitude Valley QLD 4006

Weekdays: 9.00am-5.00pm  
Saturday: 10.00am-3.00pm

## **Canberra**

Unit 1, 167 Newcastle Street  
Fyshwick 2609

Tuesday to Friday:  
10.00am-4.00pm

## **Gold Coast**

38 Ashmore Road  
Bundall QLD 4217

Weekdays: 9.00am-5.00pm

## **Melbourne**

424 Smith Street  
Collingwood VIC 3066

Weekdays: 9.00am-5.00pm  
Saturday: 10.00am-4.00pm

## **Perth**

274 Newcastle Street  
Perth WA 6000

Weekdays: 9.00am-5.00pm  
Saturday: 10.00am-3.00pm

## **Sydney**

55 Bridge Road  
Glebe NSW 2037

Weekdays: 9.00am-5.00pm  
Saturday: 10.00am-3.00pm

## **Contact us**

1300 787 888  
[info@warwick.com.au](mailto:info@warwick.com.au)  
[www.warwick.com.au](http://www.warwick.com.au)

