




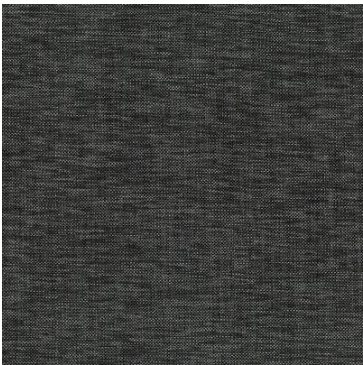
Blaze

Collection(s)	Blaze
Colour(s)	Ash, Duckegg, Frost, Jungle, Linen, Navy, Orchid, Pepper, Slate, Steel, Stone, Turquoise
Product Type(s)	Upholstery (Heavy Commercial)
Attributes	Halo Easy Care
Styles	Plain, Texture, Urban, Modern
Composition	100% Polyester
Pattern Match	No
Pattern Repeat (cm)	Plain
Railroaded	Plain Fabrics marked Railroaded 'Plain' can be cut in either direction at the discretion of the manufacturer, and in consultation with the customer's preference. Fabric is sampled in the direction it comes up the roll (Non Railroaded).
Width (cm)	140
Roll Size (approx)	40m
Weight (gsm)	406
Origin	Non European
Stain Repellent	No
FIAA Care Label	FIAA Care Label 3 – Non Pile Fabrics
Usage	<div><div>Upholstery</div><div>Cushion</div><div>Lamp Shade</div></div>
Guarantee	3 Years in accordance with our product type and care instructions

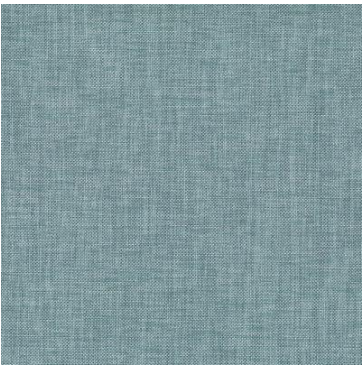
Test Results

Martindale (ISO 12947, 12kPA)	93,000 Cycles
Seam Slippage (mm) (ISO 13936-2, Load 180)	Warp 3, Weft 3
Pilling Resistance (ISO 12945-2)	3/4
Colourfastness to Light Xenon arc (ISO 105-B02, blue std 6)	6
Colourfastness to Rubbing (ISO 105-X12)	Dry 5, Wet 4/5
Free and Hydrolysed Formaldehyde (ISO 14184-1:1998)	Not Detectable
Flammability AS/NZS 1530.3 - 1999 Ignitability (0-20) Spread of Flame (0-10) Heat Involved (0-10) Smoke Developed (0-10)	10 0 2 4

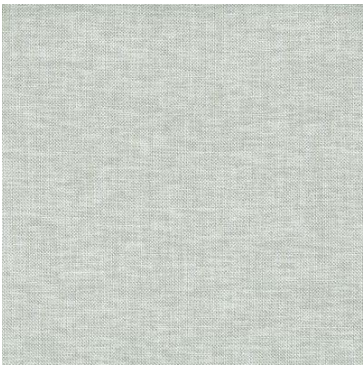
Blaze



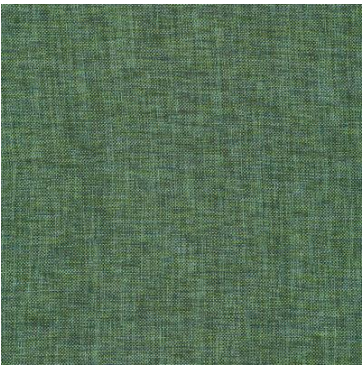
Ash



Duckegg



Frost



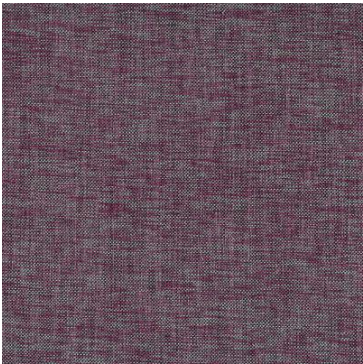
Jungle



Linen



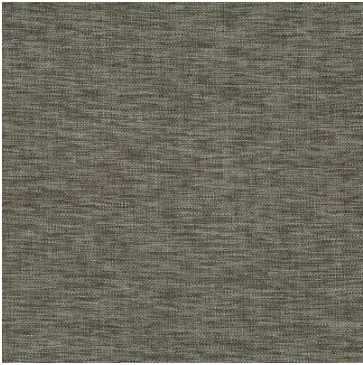
Navy



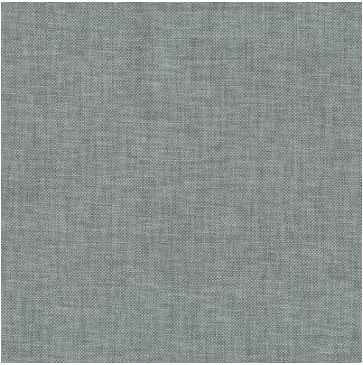
Orchid



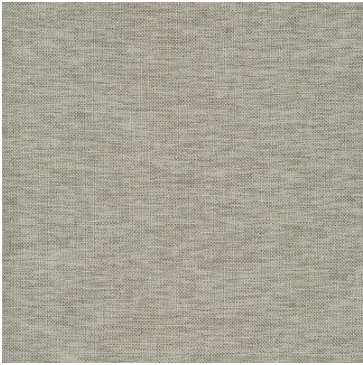
Pepper



Slate



Steel



Stone



Turquoise