



Colour(s)	Bluestone, Cactus, Cinder, Cloud, Flint, Glacier, Granite, Ink, Khaki, Lagoon, Linen, Mocha, Pearl, Pebble, Periwinkle, Petal, Plum, Ruby, Sandstone, Scuba, Sesame, Spice, Steel
Product Type(s)	Upholstery (Heavy Commercial)
Attributes	Halo Easy Care
Styles	Plain, Texture, Urban, Modern
Composition	100% Polyester
Pattern Match	No
Pattern Repeat (cm)	Plain
Railroaded	Plain Fabrics marked Railroaded 'Plain' can be cut in either direction at the discretion of the manufacturer, and in consultation with the customer's preference. Fabric is sampled in the direction it comes up the roll (Non Railroaded).
Width (cm)	145
Roll Size (approx)	40m
Weight (gsm)	430
Origin	Non European
Stain Repellent	No
FIAA Care Label	<a href="#">FIAA Care Label 3 – Non Pile Fabrics</a>
Usage	<div><div>Upholstery</div><div>Cushion</div></div>
Guarantee	3 Years in accordance with our product type and care instructions

Test Results

Martindale (ISO 12947, 12kPA)	123,000 Cycles
Seam Slippage (mm) (ISO 13936-2, Load 180)	Warp 3.1, Weft 1.0
Pilling Resistance (ISO 12945-2)	5
Colourfastness to Light Xenon arc (ISO 105-B02, blue std 6)	6
Colourfastness to Rubbing (ISO 105-X12)	Dry 4, Wet 4/5
Free and Hydrolysed Formaldehyde (ISO 14184-1:1998)	Not Detectable
Flammability AS/NZS 1530.3 - 1999	
Ignitability (0-20)	9
Spread of Flame (0-10)	0
Heat Involved (0-10)	2
Smoke Developed (0-10)	5



# Bodhi



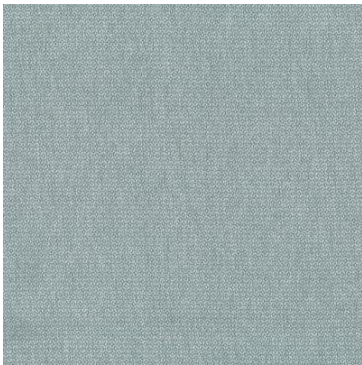
Bluestone



Cactus



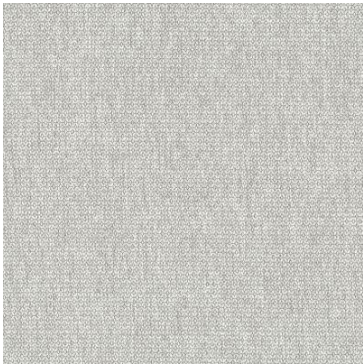
Cinder



Cloud



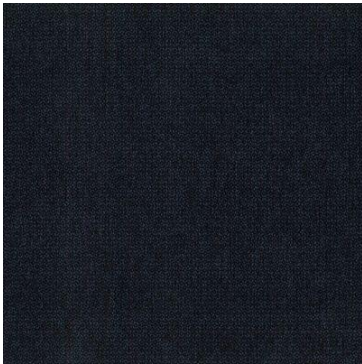
Flint



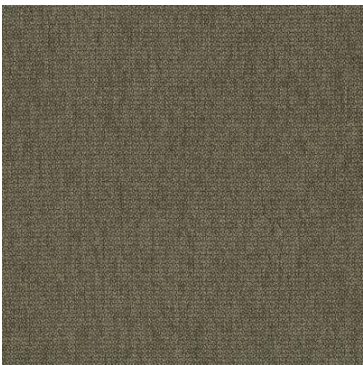
Glacier



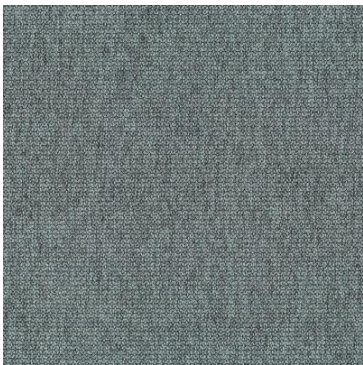
Granite



Ink



Khaki



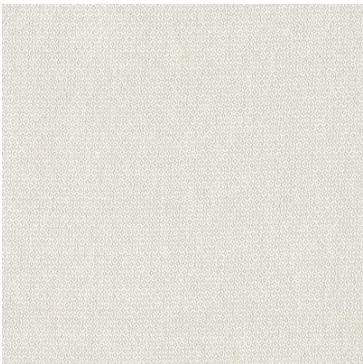
Lagoon



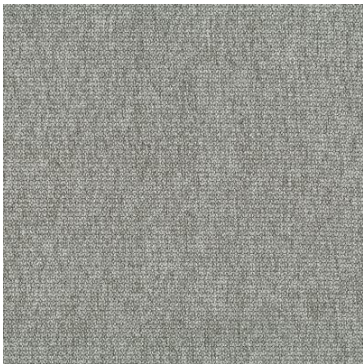
Linen



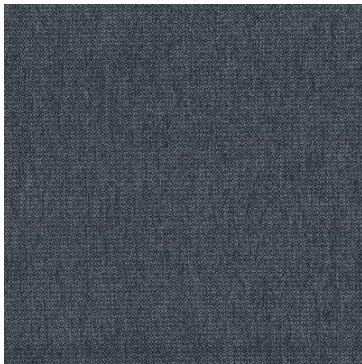
Mocha



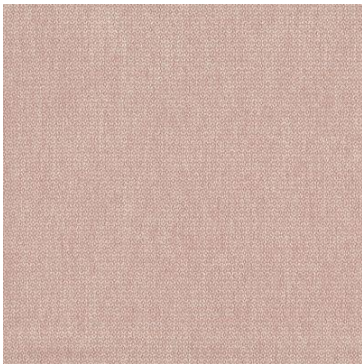
Pearl



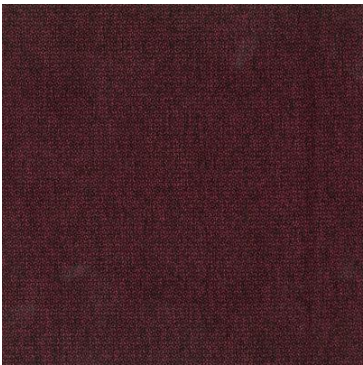
Pebble



Periwinkle



Petal



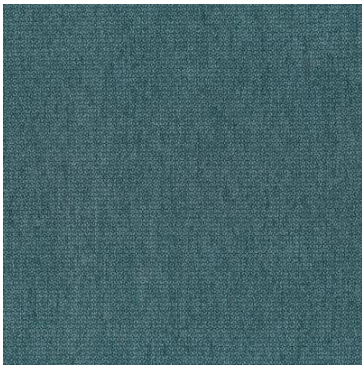
Plum



Ruby



Sandstone



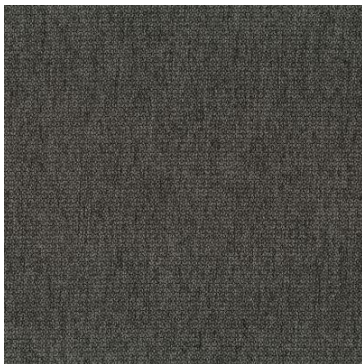
Scuba



Sesame



Spice



Steel