




Marais

Collection(s)	Marais
Colour(s)	Berry, Black, Bone, Brass, Charcoal, Chocolate, Copper, Denim, Forest, Mist, Navy, Olive, Sandstone, Silver, Snow, Teal
Product Type(s)	Upholstery (Heavy Commercial)
Attributes	Oekotex Standard 100
Styles	Plain, Texture, Contemporary, Urban, Modern, Industrial
Composition	83% Polyester 17% Cotton
Pattern Match	No
Pattern Repeat (cm)	Plain
Railroaded	Plain Fabrics marked Railroaded 'Plain' can be cut in either direction at the discretion of the manufacturer, and in consultation with the customer's preference. Fabric is sampled in the direction it comes up the roll (Non Railroaded).
Width (cm)	145
Roll Size (approx)	40m
Weight (gsm)	420
Origin	Non European
Stain Repellent	No
FIAA Care Label	FIAA Care Label 1 - Pile Fabrics, Velvets & Chenille Wovens
Usage	<div><div>Upholstery</div><div>Cushion</div><div>Lamp Shade</div></div>
Guarantee	3 Years in accordance with our product type and care instructions

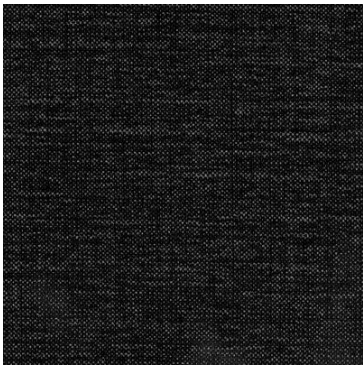
Test Results

Martindale (ISO 12947, 12kPA)	51,400 Cycles
Seam Slippage (mm) (ISO 13936-2, Load 180)	Warp 2.8, Weft 3.1
Pilling Resistance (ISO 12945-2)	4/5
Colourfastness to Light Xenon arc (ISO 105-B02, blue std 6)	6
Colourfastness to Rubbing (ISO 105-X12)	Dry 4/5, Wet 4/5
Free and Hydrolysed Formaldehyde (ISO 14184-1:1998)	Non-detectable
Flammability AS/NZS 1530.3 - 1999 Ignitability (0-20) Spread of Flame (0-10) Heat Involved (0-10) Smoke Developed (0-10)	11 9 4 5
Oekotex Standard 100	SH015 136790 TESTEX

Marais



Berry



Black



Bone



Brass



Charcoal



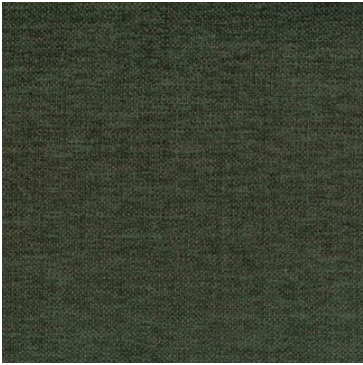
Chocolate



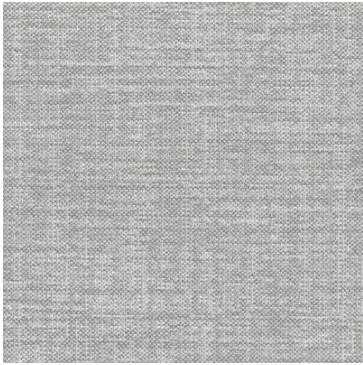
Copper



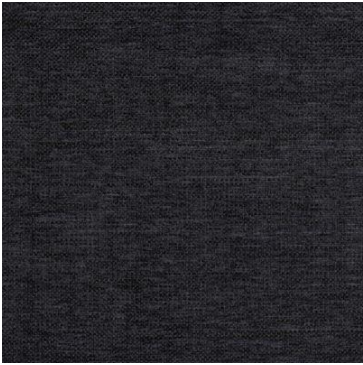
Denim



Forest



Mist



Navy



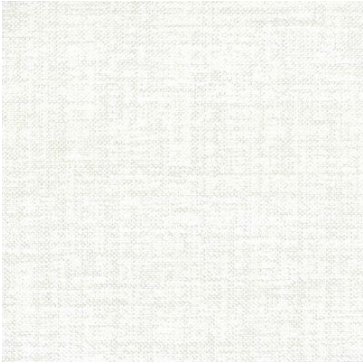
Olive



Sandstone



Silver



Snow



Teal