




# L I N I A

## Moretti

Collection(s)	Moretti
Colour(s)	Angora, Flax, Mocha, Slate
Product Type(s)	Upholstery (General Domestic)
Attributes	Oekotex Standard 100
Styles	Plain, Contemporary, Modern
Composition	36% Viscose 32% Acrylic 22% Cotton 10% Polyester
Pattern Match	No
Pattern Repeat (cm)	Plain
Railroaded	Plain Fabrics marked Railroaded 'Plain' can be cut in either direction at the discretion of the manufacturer, and in consultation with the customer's preference. Fabric is sampled in the direction it comes up the roll (Non Railroaded).
Width (cm)	140
Roll Size (approx)	30m
Weight (gsm)	580
Origin	Italy
Stain Repellent	No
FIAA Care Label	<a href="#">FIAA Care Label 3 - Non Pile Fabrics</a>
Usage	 Upholstery  Cushion  Lamp Shade
Guarantee	3 Years in accordance with our product type and care instructions

## Test Results

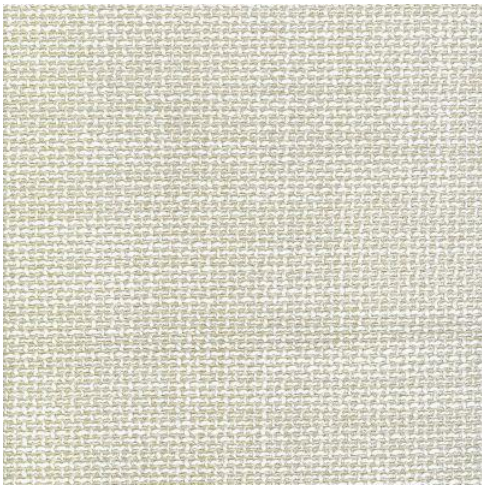
Martindale (ISO 12947, 12kPA)	15,000 - 20,000 Cycles
Seam Slippage (mm) (ISO 13936-2, Load 180)	Warp 2.6, Weft 5.4
Pilling Resistance (ISO 12945-2)	5
Colourfastness to Light Xenon arc (ISO 105-B02, blue std 6)	>6
Colourfastness to Rubbing (ISO 105-X12)	Dry 5, Wet 4
Free and Hydrolysed Formaldehyde (ISO 14184-1:1998)	Not Detectable
Flammability AS/NZS 1530.3 - 1999 Ignitability (0-20) Spread of Flame (0-10) Heat Involved (0-10) Smoke Developed (0-10)	- - - -
Oekotex Standard 100	NA



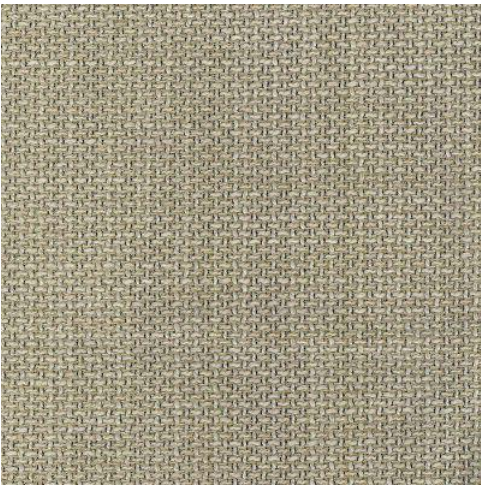
Warwick Fabrics  
(India) Pvt Ltd  
T +91 9987911409  
salesindia@warwick.com.au  
www.warwickindia.co.in

New Delhi  
B-225, 4th Floor  
Okhla Industrial Area Phase-I  
(Diagonally opposite Nathu's  
Sweets)  
New Delhi 110020

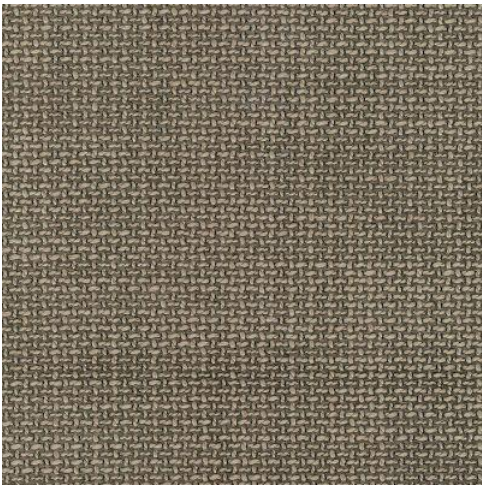
# Linia Moretti



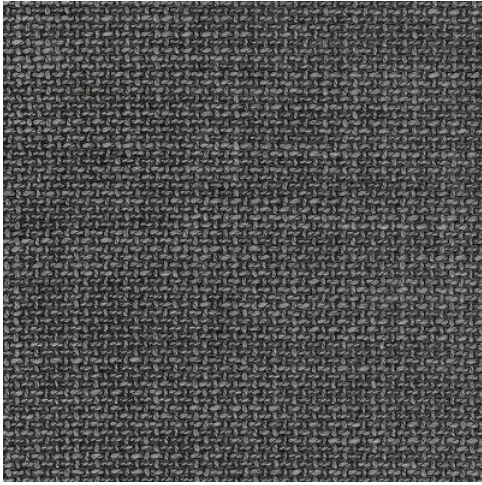
Angora



Flax



Mocha



Slate