



Rover

Collection(s)	Tangent
Colour(s)	Charcoal, Ebony, Garnet, Leaf, Ocean, Peacock, Seafoam, Stone, Tango, Tobacco
Product Type(s)	Upholstery (General Commercial / Heavy Domestic)
Attributes	Halo Easy Care, Oekotex Standard 100
Styles	Plain, Texture, Urban
Composition	82% Polyester 18% Olefin
Pattern Match	No
Pattern Repeat (cm)	Plain
Railroaded	Plain Fabrics marked Railroaded 'Plain' can be cut in either direction at the discretion of the manufacturer, and in consultation with the customer's preference. Fabric is sampled in the direction it comes up the roll (Non Railroaded).
Width (cm)	140
Roll Size (approx)	50m
Weight (gsm)	285
Origin	Non European
Stain Repellent	No
FIAA Care Label	FIAA Care Label 1 - Pile Fabrics, Velvets & Chenille Wovens
Usage	<div><div>Upholstery</div><div>Cushion</div></div>
Guarantee	3 Years in accordance with our product type and care instructions

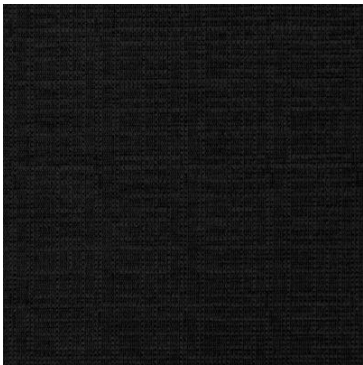
Test Results

Martindale (ISO 12947, 12kPA)	20,000 - 40,000 Cycles
Seam Slippage (mm) (ISO 13936-2, Load 180)	Warp 4.0, Weft 5.0
Pilling Resistance (ISO 12945-2)	5
Colourfastness to Light Xenon arc (ISO 105-B02, blue std 6)	>6
Colourfastness to Rubbing (ISO 105-X12)	Dry 5, Wet 5
Free and Hydrolysed Formaldehyde (ISO 14184-1:1998)	Not Detectable
Flammability AS/NZS 1530.3 - 1999 Ignitability (0-20) Spread of Flame (0-10) Heat Involved (0-10) Smoke Developed (0-10)	9 0 2 5
Oekotex Standard 100	11-31643 SHIRLEY
Quality Management System ISO9001	Yes

Rover



Charcoal



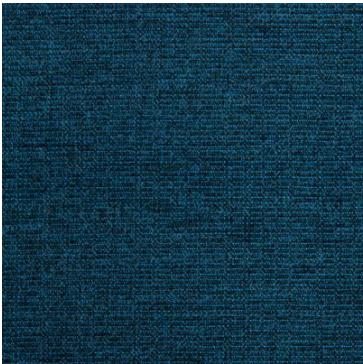
Ebony



Garnet



Leaf



Ocean



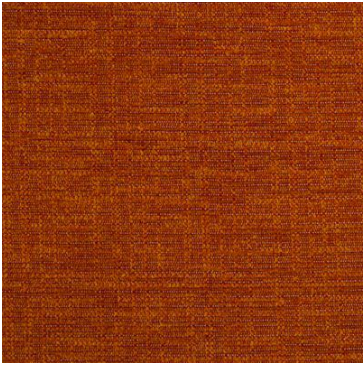
Peacock



Seafoam



Stone



Tango



Tobacco